

## Golgin 45 Polyclonal Antibody

|                     |  |
|---------------------|--|
| Catalog_no :        | AT1942   |
| Applications :      | WB,IHC-p,IF,ELISA  |
| Reactivity :        | Human,Mouse  |
| Category :          | 抗原抗体   |
| Size :              | 100µg/50µg/20µg  |
| Gene_name :         | BLZF1  |
| Protein_name :      | Golgin-45  |
| Humangene_id :      | <a href="#">8548</a>   |
| Humanswissprot_no : | <a href="#">Q9H2G9</a>   |
| Mousegene_id :      | <a href="#">66352</a>  |
| Mouseswissprot_no : | <a href="#">Q8R2X8</a>   |
| Immunogen :         | The antiserum was produced against synthesized peptide derived from human BLZF1. AA range:10-59  |
| Specificity :       | Golgin 45 Polyclonal Antibody detects endogenous levels of Golgin 45 protein.  |
| Formulation :       | Liquid in PBS containing 50% glycerol, 0.5% BSA and 0.02% sodium azide.  |
| Source :            | Rabbit   |
| Dilution :          | Western Blot: 1/500 - 1/2000. Immunohistochemistry: 1/100 - 1/300. Immunofluorescence: 1/200 - 1/1000. ELISA: 1/20000. Not yet tested in other applications. |
| Purification :      | The antibody was affinity-purified from rabbit antiserum by affinity-chromatography using epitope-specific immunogen.  |
| Concentration :     | 1 mg/ml  |
| Storage_stability : | -20°C/1 year   |
| Msds :              | <a href="#">MSDS_Antibody.pdf</a>  |
| Other_name :        | BLZF1; JEM1; Golgin-45; Basic leucine zipper nuclear factor 1; JEM-1; p45 basic leucine-zipper nuclear factor  |

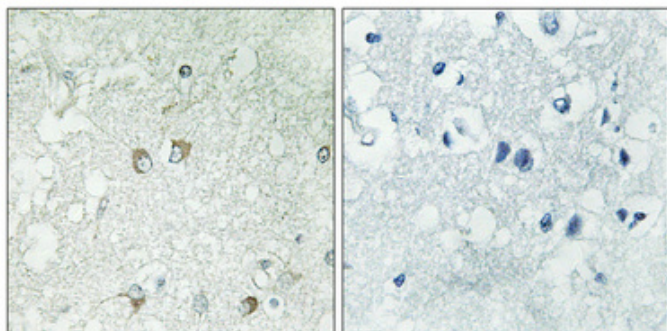


Molecular  
Weight :

47KD

---

## Product Images



Immunohistochemical analysis of paraffin-embedded Human brain. Antibody was diluted at 1:100(4°,overnight). High-pressure and temperature Tris-EDTA,pH8.0 was used for antigen retrieval. Negative contrl (right) obtaned from antibody was pre-absorbed by immunogen peptide.