



GPR105 Polyclonal Antibody

Catalog_no :	<u>AT1952</u>
Applications :	<u>WB,IHC-p,IF,ELISA</u>
Reactivity :	<u>Human,Mouse,Rat</u>
Category :	<u>抗原抗体</u>
Size :	<u>100µg/50µg/20µg</u>
Gene_name :	<u>P2RY14</u>
Protein_name :	<u>P2Y purinoceptor 14</u>
Humangene_id	<u>9934</u>
:	<u></u>
Humanswissprot	<u>Q15391</u>
_no :	<u></u>
Mousegene_id :	<u>140795</u>
Mouseswissprot	<u>Q9ESG6</u>
_no :	<u></u>
Ratgene_id :	<u>171108</u>
Ratswissprot_no	<u>O35881</u>
:	<u></u>
Immunogen :	<u>The antiserum was produced against synthesized peptide derived from human GPR105. AA range:146-195</u>
Specificity :	<u>GPR105 Polyclonal Antibody detects endogenous levels of GPR105 protein.</u>
Formulation :	<u>Liquid in PBS containing 50% glycerol, 0.5% BSA and 0.02% sodium azide.</u>
Source :	<u>Rabbit</u>
Dilution :	<u>Western Blot: 1/500 - 1/2000. Immunohistochemistry: 1/100 - 1/300. Immunofluorescence: 1/200 - 1/1000. ELISA: 1/10000. Not yet tested in other applications.</u>
Purification :	<u>The antibody was affinity-purified from rabbit antiserum by affinity-chromatography using epitope-specific immunogen.</u>
Concentration :	<u>1 mg/ml</u>
Storage_stability	<u>-20°C/1 year</u>
:	<u></u>

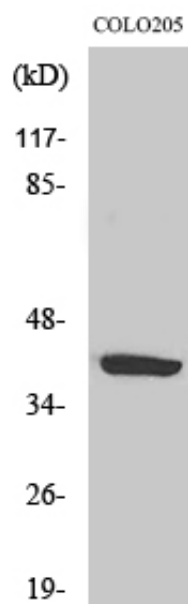


MsdS : MSDS_Antibody.pdf

Other_name : P2RY14; GPR105; KIAA0001; P2Y purinoceptor 14; P2Y14; G-protein coupled receptor 105; UDP-glucose receptor

Molecular Weight : 39KD

Product Images



Western Blot analysis of various cells using GPR105 Polyclonal Antibody