

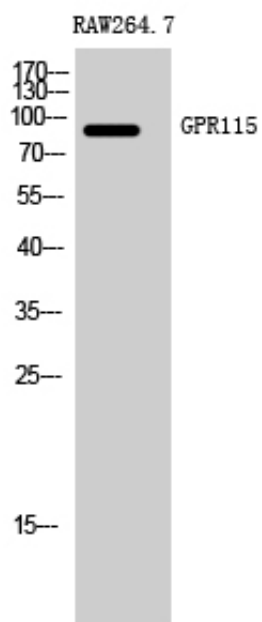
GPR115 Polyclonal Antibody

Catalog_no :	AT1959
Applications :	WB,IF,ELISA
Reactivity :	Human,Mouse
Category :	抗原抗体
Size :	100µg/50µg/20µg
Gene_name :	GPR115
Protein_name :	Probable G-protein coupled receptor 115
Humangene_id :	221393
Humanswissprot_no :	Q8IZE3
Mousegene_id :	78249
Mouseswissprot_no :	Q9D2L6
Immunogen :	The antiserum was produced against synthesized peptide derived from human GPR115. AA range:641-690
Specificity :	GPR115 Polyclonal Antibody detects endogenous levels of GPR115 protein.
Formulation :	Liquid in PBS containing 50% glycerol, 0.5% BSA and 0.02% sodium azide.
Source :	Rabbit
Dilution :	Western Blot: 1/500 - 1/2000. Immunofluorescence: 1/200 - 1/1000. ELISA: 1/10000. Not yet tested in other applications.
Purification :	The antibody was affinity-purified from rabbit antiserum by affinity-chromatography using epitope-specific immunogen.
Concentration :	1 mg/ml
Storage_stability :	-20°C/1 year
Msds :	MSDS_Antibody.pdf
Other_name :	GPR115; PGR18; Probable G-protein coupled receptor 115; G-protein coupled receptor PGR18
Molecular	82KD



Weight :

Product Images



Western Blot analysis of RAW264.7 cells using GPR115 Polyclonal Antibody