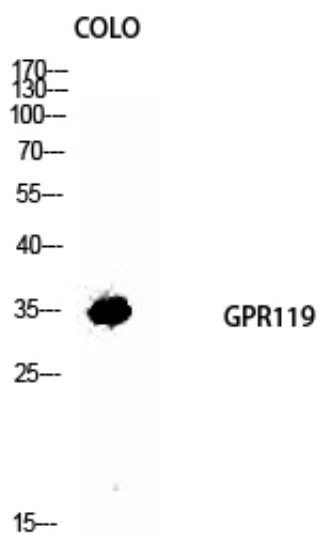




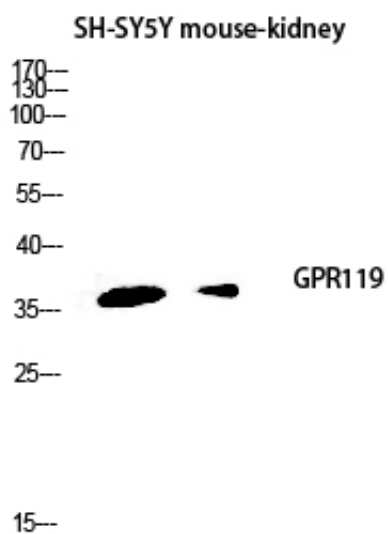
## GPR119 Polyclonal Antibody

Catalog_no :	AT1962
Applications :	WB,IF,ELISA
Reactivity :	Human
Category :	抗原抗体
Size :	100µg/50µg/20µg
Gene_name :	GPR119
Protein_name :	Glucose-dependent insulinotropic receptor
Humangene_id :	<a href="#">139760</a>
Humanswissprot_no :	<a href="#">Q8TDV5</a>
Immunogen :	The antiserum was produced against synthesized peptide derived from human GPR119. AA range:186-235
Specificity :	GPR119 Polyclonal Antibody detects endogenous levels of GPR119 protein.
Formulation :	Liquid in PBS containing 50% glycerol, 0.5% BSA and 0.02% sodium azide.
Source :	Rabbit
Dilution :	Western Blot: 1/500 - 1/2000. Immunofluorescence: 1/200 - 1/1000. ELISA: 1/10000. Not yet tested in other applications.
Purification :	The antibody was affinity-purified from rabbit antiserum by affinity-chromatography using epitope-specific immunogen.
Concentration :	1 mg/ml
Storage_stability :	-20°C/1 year
Msds :	MSDS_Antibody.pdf
Other_name :	GPR119; Glucose-dependent insulinotropic receptor; G-protein coupled receptor 119
Molecular Weight :	37KD

## Product Images



Western Blot analysis of COLO cells using GPR119 Polyclonal Antibody diluted at 1 : 1000



Western blot analysis of SH-SY5Y mouse-kidney lysis using GPR119 antibody. Antibody was diluted at 1:1000