

## GPR139 Polyclonal Antibody

Catalog_no :	AT1972
Applications :	WB,IF,ELISA
Reactivity :	Human,Mouse,Rat
Category :	抗原抗体
Size :	100µg/50µg/20µg
Gene_name :	GPR139
Protein_name :	Probable G-protein coupled receptor 139
Humangene_id :	<a href="#">124274</a>
Humanswissprot_no :	<a href="#">Q6DWJ6</a>
Mousegene_id :	<a href="#">209776</a>
Mouseswissprot_no :	<a href="#">Q80UC8</a>
Ratgene_id :	<a href="#">293545</a>
Ratswissprot_no :	<a href="#">P0C0W8</a>
Immunogen :	The antiserum was produced against synthesized peptide derived from human GPR139. AA range:181-230
Specificity :	GPR139 Polyclonal Antibody detects endogenous levels of GPR139 protein.
Formulation :	Liquid in PBS containing 50% glycerol, 0.5% BSA and 0.02% sodium azide.
Source :	Rabbit
Dilution :	Western Blot: 1/500 - 1/2000. Immunofluorescence: 1/200 - 1/1000. ELISA: 1/5000. Not yet tested in other applications.
Purification :	The antibody was affinity-purified from rabbit antiserum by affinity-chromatography using epitope-specific immunogen.
Concentration :	1 mg/ml
Storage_stability :	-20°C/1 year
Msds :	MSDS_Antibody.pdf



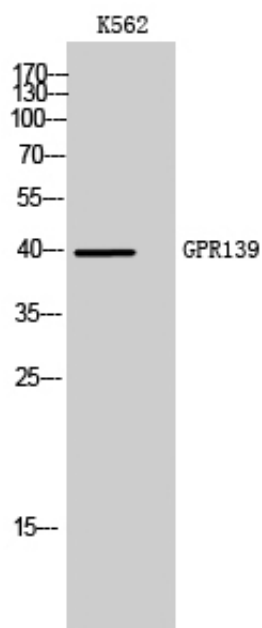
Other\_name : GPR139; GPRG1; PGR3; Probable G-protein coupled receptor 139; G(q)-coupled orphan receptor GPRg1; G-protein-coupled receptor PGR3

---

Molecular Weight : 40KD

---

## Product Images



Western Blot analysis of K562 cells using GPR139 Polyclonal Antibody