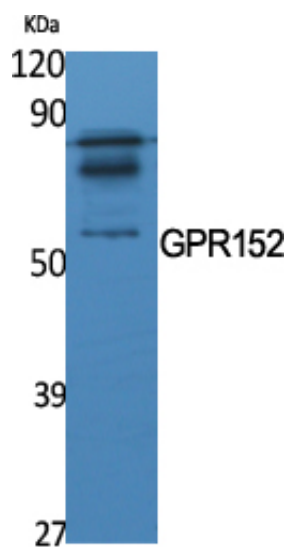


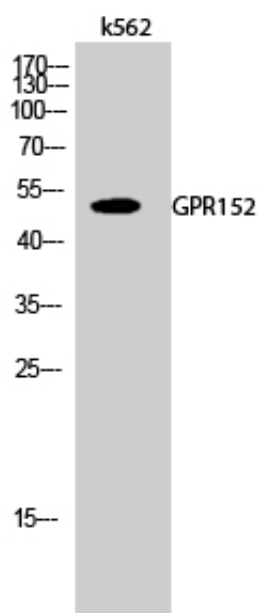
## GPR152 Polyclonal Antibody

Catalog_no :	AT1984
Applications :	WB,IF,ELISA
Reactivity :	Human
Category :	抗原抗体
Size :	100µg/50µg/20µg
Gene_name :	GPR152
Protein_name :	Probable G-protein coupled receptor 152
Humangene_id :	<a href="#">390212</a>
Humanswissprot_no :	<a href="#">Q8TDT2</a>
Immunogen :	The antiserum was produced against synthesized peptide derived from human GPR152. AA range:10-59
Specificity :	GPR152 Polyclonal Antibody detects endogenous levels of GPR152 protein.
Formulation :	Liquid in PBS containing 50% glycerol, 0.5% BSA and 0.02% sodium azide.
Source :	Rabbit
Dilution :	Western Blot: 1/500 - 1/2000. Immunofluorescence: 1/200 - 1/1000. ELISA: 1/20000. Not yet tested in other applications.
Purification :	The antibody was affinity-purified from rabbit antiserum by affinity-chromatography using epitope-specific immunogen.
Concentration :	1 mg/ml
Storage_stability :	-20°C/1 year
Msds :	MSDS_Antibody.pdf
Other_name :	GPR152; PGR5; Probable G-protein coupled receptor 152; G-protein coupled receptor PGR5
Molecular Weight :	51KD

## Product Images



Western Blot analysis of various cells using GPR152 Polyclonal Antibody



Western Blot analysis of k562 cells using GPR152 Polyclonal Antibody