

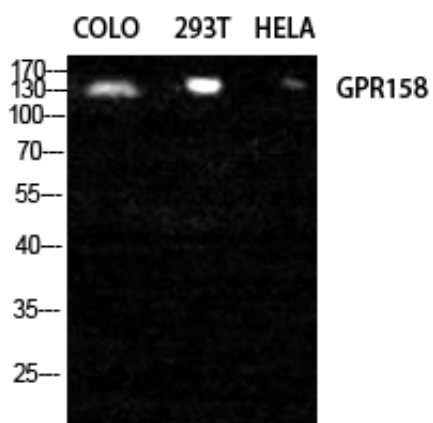
GPR158 Polyclonal Antibody

Catalog_no :	AT1989
Applications :	WB,IHC-p,IF,ELISA
Reactivity :	Human,Mouse
Category :	抗原抗体
Size :	100µg/50µg/20µg
Gene_name :	GPR158
Protein_name :	Probable G-protein coupled receptor 158
Humangene_id :	57512
Humanswissprot_no :	Q5T848
Mousegene_id :	241263
Mouseswissprot_no :	Q8C419
Immunogen :	The antiserum was produced against synthesized peptide derived from human GPR158. AA range:1-50
Specificity :	GPR158 Polyclonal Antibody detects endogenous levels of GPR158 protein.
Formulation :	Liquid in PBS containing 50% glycerol, 0.5% BSA and 0.02% sodium azide.
Source :	Rabbit
Dilution :	Western Blot: 1/500 - 1/2000. Immunohistochemistry: 1/100 - 1/300. Immunofluorescence: 1/200 - 1/1000. ELISA: 1/5000. Not yet tested in other applications.
Purification :	The antibody was affinity-purified from rabbit antiserum by affinity-chromatography using epitope-specific immunogen.
Concentration :	1 mg/ml
Storage_stability :	-20°C/1 year
Msds :	MSDS_Antibody.pdf
Other_name :	GPR158; KIAA1136; Probable G-protein coupled receptor 158
Molecular	150KD



Weight :

Product Images



Western Blot analysis of COLO 293T HELA cells using GPR158 Polyclonal Antibody diluted at 1 : 2000