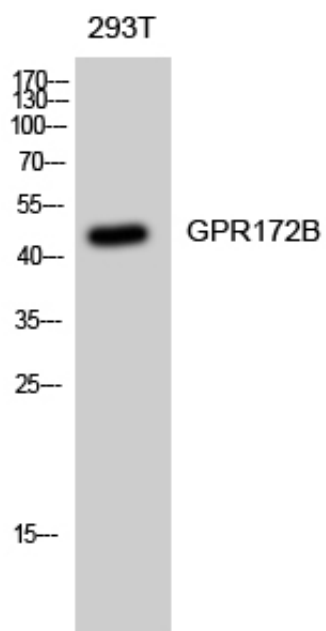


## GPR172B Polyclonal Antibody

Catalog_no :	AT1996
Applications :	WB,IF,ELISA
Reactivity :	Human
Category :	抗原抗体
Size :	100µg/50µg/20µg
Gene_name :	SLC52A1
Protein_name :	Solute carrier family 52 riboflavin transporter member 1
Humangene_id :	<a href="#">55065</a>
Humanswissprot_no :	<a href="#">Q9NWF4</a>
Immunogen :	The antiserum was produced against synthesized peptide derived from human PEVR2. AA range:235-284
Specificity :	GPR172B Polyclonal Antibody detects endogenous levels of GPR172B protein.
Formulation :	Liquid in PBS containing 50% glycerol, 0.5% BSA and 0.02% sodium azide.
Source :	Rabbit
Dilution :	Western Blot: 1/500 - 1/2000. Immunofluorescence: 1/200 - 1/1000. ELISA: 1/10000. Not yet tested in other applications.
Purification :	The antibody was affinity-purified from rabbit antiserum by affinity-chromatography using epitope-specific immunogen.
Concentration :	1 mg/ml
Storage_stability :	-20°C/1 year
Msds :	MSDS_Antibody.pdf
Other_name :	SLC52A1; GPR172B; PAR2; RFT1; Solute carrier family 52; riboflavin transporter, member 1; Porcine endogenous retrovirus A receptor 2; PERV-A receptor 2; Protein GPR172B; Riboflavin transporter 1; hRFT1
Molecular Weight :	46KD

## Product Images



Western Blot analysis of 293T cells using GPR172B  
Polyclonal Antibody diluted at 1 : 1000