

GPR19 Polyclonal Antibody

Catalog_no :	AT2007
Applications :	WB,IHC-p,IF,ELISA
Reactivity :	Human,Mouse,Rat
Category :	抗原抗体
Size :	100µg/50µg/20µg
Gene_name :	GPR19
Protein_name :	Probable G-protein coupled receptor 19
Humangene_id :	2842
Humanswissprot_no :	Q15760
Mousegene_id :	14760
Mouseswissprot_no :	Q61121
Ratgene_id :	312787
Ratswissprot_no :	P70585
Immunogen :	The antiserum was produced against synthesized peptide derived from human GPR19. AA range:361-410
Specificity :	GPR19 Polyclonal Antibody detects endogenous levels of GPR19 protein.
Formulation :	Liquid in PBS containing 50% glycerol, 0.5% BSA and 0.02% sodium azide.
Source :	Rabbit
Dilution :	Western Blot: 1/500 - 1/2000. Immunohistochemistry: 1/100 - 1/300. Immunofluorescence: 1/200 - 1/1000. ELISA: 1/5000. Not yet tested in other applications.
Purification :	The antibody was affinity-purified from rabbit antiserum by affinity-chromatography using epitope-specific immunogen.
Concentration :	1 mg/ml
Storage_stability :	-20°C/1 year

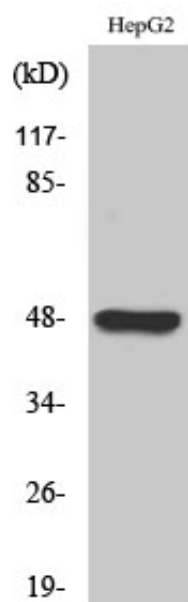


Msd : MSDS_Antibody.pdf

Other_name : GPR19; Probable G-protein coupled receptor 19; GPR-NGA

Molecular Weight : 47KD

Product Images



Western Blot analysis of various cells using GPR19 Polyclonal Antibody cells nucleus extracted by Minute TM Cytoplasmic and Nuclear Fractionation kit (SC-003, Inventbiotech, MN, USA).