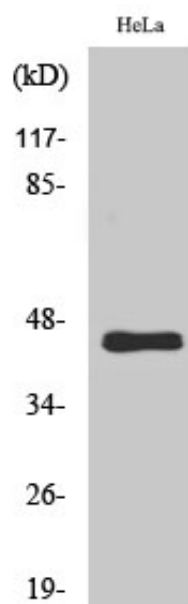


GPR38 Polyclonal Antibody

Catalog_no :	AT2018
Applications :	WB,ELISA
Reactivity :	Human
Category :	抗原抗体
Size :	100µg/50µg/20µg
Gene_name :	MLNR
Protein_name :	Motilin receptor
Humangene_id :	2862
Humanswissprot_no :	O43193
Immunogen :	Synthesized peptide derived from the C-terminal region of human GPR38.
Specificity :	GPR38 Polyclonal Antibody detects endogenous levels of GPR38 protein.
Formulation :	Liquid in PBS containing 50% glycerol, 0.5% BSA and 0.02% sodium azide.
Source :	Rabbit
Dilution :	Western Blot: 1/500 - 1/2000. ELISA: 1/20000. Not yet tested in other applications.
Purification :	The antibody was affinity-purified from rabbit antiserum by affinity-chromatography using epitope-specific immunogen.
Concentration :	1 mg/ml
Storage_stability :	-20°C/1 year
Msds :	MSDS_Antibody.pdf
Other_name :	MLNR; GPR38; MTLR; MTLR1; Motilin receptor; G-protein coupled receptor 38
Molecular Weight :	45KD

Product Images



Western Blot analysis of various cells using GPR38 Polyclonal Antibody