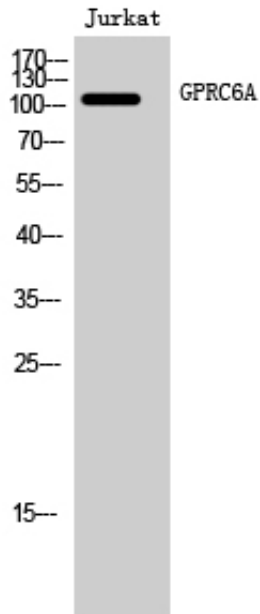




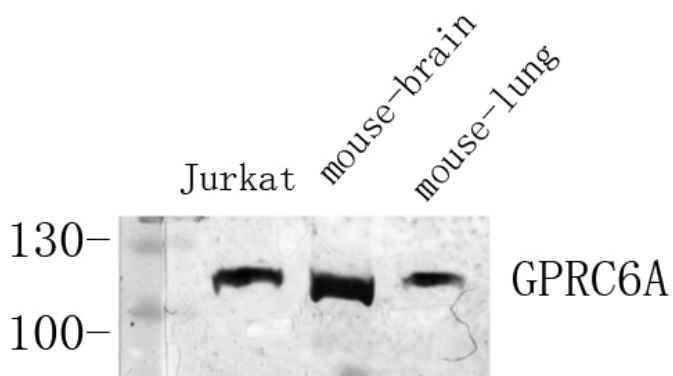
## GPRC6A Polyclonal Antibody

Catalog_no :	AT2040
Applications :	WB,IF,ELISA
Reactivity :	Human
Category :	抗原抗体
Size :	100µg/50µg/20µg
Gene_name :	GPRC6A
Protein_name :	G-protein coupled receptor family C group 6 member A
Humangene_id :	<a href="#">222545</a>
Humanswissprot_no :	<a href="#">Q5T6X5</a>
Immunogen :	The antiserum was produced against synthesized peptide derived from human GPRC6A. AA range:471-520
Specificity :	GPRC6A Polyclonal Antibody detects endogenous levels of GPRC6A protein.
Formulation :	Liquid in PBS containing 50% glycerol, 0.5% BSA and 0.02% sodium azide.
Source :	Rabbit
Dilution :	Western Blot: 1/500 - 1/2000. Immunofluorescence: 1/200 - 1/1000. ELISA: 1/5000. Not yet tested in other applications.
Purification :	The antibody was affinity-purified from rabbit antiserum by affinity-chromatography using epitope-specific immunogen.
Concentration :	1 mg/ml
Storage_stability :	-20°C/1 year
Msds :	MSDS_Antibody.pdf
Other_name :	GPRC6A; G-protein coupled receptor family C group 6 member A; hGPRC6A; G-protein coupled receptor GPCR33; hGPCR33
Molecular Weight :	105KD

## Product Images



Western Blot analysis of Jurkat cells using GPRC6A Polyclonal Antibody diluted at 1 : 1000



Western Blot analysis of various cells using Antibody diluted at 1:1000. Secondary antibody was diluted at 1:20000