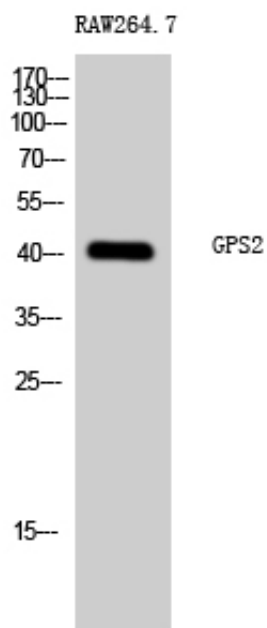




GPS2 Polyclonal Antibody

Catalog_no :	AT2041
Applications :	WB,ELISA
Reactivity :	Human,Mouse,Rat
Category :	抗原抗体
Size :	100µg/50µg/20µg
Gene_name :	GPS2
Protein_name :	G protein pathway suppressor 2
Humangene_id :	2874
Humanswissprot_no :	Q13227
Immunogen :	The antiserum was produced against synthesized peptide derived from human GPS2. AA range:11-60
Specificity :	GPS2 Polyclonal Antibody detects endogenous levels of GPS2 protein.
Formulation :	Liquid in PBS containing 50% glycerol, 0.5% BSA and 0.02% sodium azide.
Source :	Rabbit
Dilution :	Western Blot: 1/500 - 1/2000. ELISA: 1/40000. Not yet tested in other applications.
Purification :	The antibody was affinity-purified from rabbit antiserum by affinity-chromatography using epitope-specific immunogen.
Concentration :	1 mg/ml
Storage_stability :	-20°C/1 year
Msds :	MSDS_Antibody.pdf
Other_name :	GPS2; G protein pathway suppressor 2; GPS-2
Molecular Weight :	40KD

Product Images



Western Blot analysis of RAW264.7 cells using GPS2 Polyclonal Antibody cells nucleus extracted by Minute TM Cytoplasmic and Nuclear Fractionation kit (SC-003, Inventbiotech, MN, USA).