

GR Polyclonal Antibody

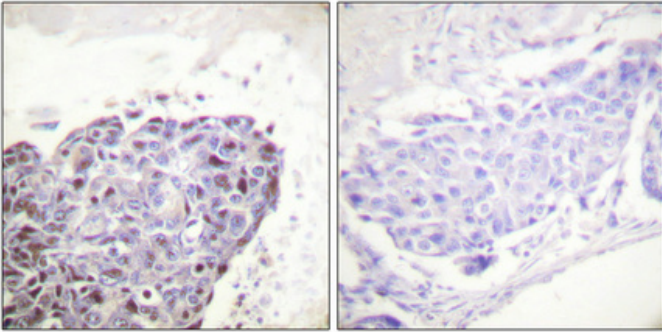
Catalog_no :	AT2045
Applications :	WB,IHC-p,IF,ELISA
Reactivity :	Human,Mouse,Rat
Category :	抗原抗体
Size :	100µg/50µg/20µg
Gene_name :	NR3C1
Protein_name :	Glucocorticoid receptor
Humangene_id	2908
:	
Humanswissprot	P04150
_no :	
Mouseswissprot	P06537
_no :	
Ratgene_id :	24413
Ratswissprot_no	P06536
:	
Immunogen :	The antiserum was produced against synthesized peptide derived from human GR. AA range:181-230
Specificity :	GR Polyclonal Antibody detects endogenous levels of GR protein.
Formulation :	Liquid in PBS containing 50% glycerol, 0.5% BSA and 0.02% sodium azide.
Source :	Rabbit
Dilution :	Western Blot: 1/500 - 1/2000. Immunohistochemistry: 1/100 - 1/300. Immunofluorescence: 1/200 - 1/1000. ELISA: 1/40000. Not yet tested in other applications.
Purification :	The antibody was affinity-purified from rabbit antiserum by affinity-chromatography using epitope-specific immunogen.
Concentration :	1 mg/ml
Storage_stability	-20°C/1 year
:	
Msds :	MSDS_Antibody.pdf



Other_name : NR3C1; GRL; Glucocorticoid receptor; GR; Nuclear receptor subfamily 3 group C member 1

Molecular Weight : 95KD

Product Images



Immunohistochemical analysis of paraffin-embedded Human breast cancer. Antibody was diluted at 1:100(4°,overnight). High-pressure and temperature Tris-EDTA,pH8.0 was used for antigen retrieval. Negative contrl (right) obtaned from antibody was pre-absorbed by immunogen peptide.