

## Granzyme B/H Polyclonal Antibody

Catalog_no :	<u>AT2049</u>
Applications :	<u>WB,IHC-p,ELISA</u>
Reactivity :	<u>Human,Mouse,Rat</u>
Category :	<u>抗原抗体</u>
Size :	<u>100µg/50µg/20µg</u>
Gene_name :	<u>GZMB/GZMH</u>
Protein_name :	<u>Granzyme B/H</u>
Humangene_id :	<u><a href="#">2999</a></u>
Humanswissprot_no :	<u><a href="#">P10144/P20718</a></u>
Mousegene_id :	<u><a href="#">14939</a></u>
Ratgene_id :	<u><a href="#">1.00361e+008</a></u>
Ratswissprot_no :	<u><a href="#">P18291</a></u>
Immunogen :	<u>The antiserum was produced against synthesized peptide derived from human Granzyme B. AA range:10-59</u>
Specificity :	<u>Granzyme B/H Polyclonal Antibody detects endogenous levels of Granzyme B/H protein.</u>
Formulation :	<u>Liquid in PBS containing 50% glycerol, 0.5% BSA and 0.02% sodium azide.</u>
Source :	<u>Rabbit</u>
Dilution :	<u>Western Blot: 1/500 - 1/2000. Immunohistochemistry: 1/100 - 1/300. ELISA: 1/5000. Not yet tested in other applications.</u>
Purification :	<u>The antibody was affinity-purified from rabbit antiserum by affinity-chromatography using epitope-specific immunogen.</u>
Concentration :	<u>1 mg/ml</u>
Storage_stability :	<u>-20°C/1 year</u>
Msds :	<u><a href="#">MSDS_Antibody.pdf</a></u>
Other_name :	<u>GZMB; CGL1; CSPB; CTLA1; GRB; Granzyme B; C11; CTLA-1; Cathepsin G-like 1; CTSLG1; Cytotoxic T-lymphocyte proteinase 2; Lymphocyte protease; Fragmentin-2; Granzyme-2;</u>



Human lymphocyte protein; HLP; SECT; T-cell serine protease 1-3E; GZMH; C

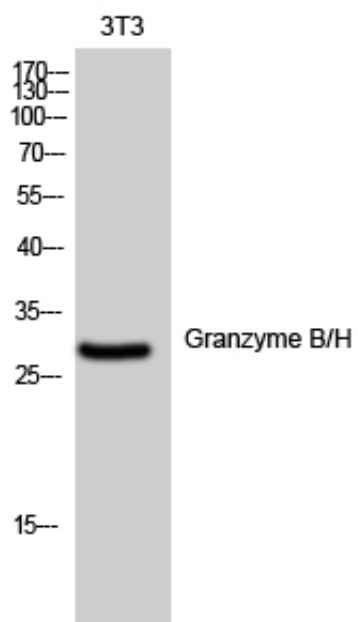
---

Molecular  
Weight :

28KD

---

## Product Images



Western Blot analysis of 3T3 cells using Granzyme B/H Polyclonal Antibody diluted at 1 : 500