

## GRB14 Polyclonal Antibody

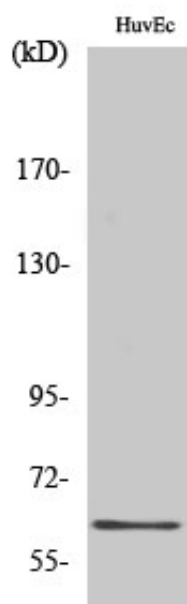
Catalog_no :	<u>AT2055</u>
Applications :	<u>WB,IHC-p,ELISA</u>
Reactivity :	<u>Human,Mouse,Rat</u>
Category :	<u>抗原抗体</u>
Size :	<u>100µg/50µg/20µg</u>
Gene_name :	<u>GRB14</u>
Protein_name :	<u>Growth factor receptor-bound protein 14</u>
Humangene_id :	<u><a href="#">2888</a></u>
Humanswissprot_no :	<u><a href="#">Q14449</a></u>
Mousegene_id :	<u><a href="#">50915</a></u>
Mouseswissprot_no :	<u><a href="#">Q9JLM9</a></u>
Ratgene_id :	<u><a href="#">58844</a></u>
Ratswissprot_no :	<u><a href="#">O88900</a></u>
Immunogen :	<u>The antiserum was produced against synthesized peptide derived from human GRB14. AA range:81-130</u>
Specificity :	<u>GRB14 Polyclonal Antibody detects endogenous levels of GRB14 protein.</u>
Formulation :	<u>Liquid in PBS containing 50% glycerol, 0.5% BSA and 0.02% sodium azide.</u>
Source :	<u>Rabbit</u>
Dilution :	<u>Western Blot: 1/500 - 1/2000. Immunohistochemistry: 1/100 - 1/300. ELISA: 1/40000. Not yet tested in other applications.</u>
Purification :	<u>The antibody was affinity-purified from rabbit antiserum by affinity-chromatography using epitope-specific immunogen.</u>
Concentration :	<u>1 mg/ml</u>
Storage_stability :	<u>-20°C/1 year</u>
Msds :	<u>MSDS_Antibody.pdf</u>



Other\_name : GRB14; Growth factor receptor-bound protein 14; GRB14 adapter protein

Molecular Weight : 61KD

## Product Images



Western Blot analysis of various cells using GRB14 Polyclonal Antibody