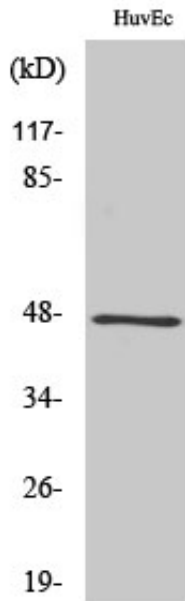


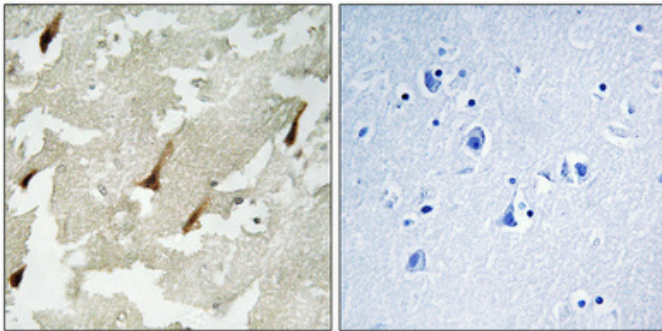
## GRIN2 Polyclonal Antibody

Catalog_no :	AT2060
Applications :	WB,IHC-p,ELISA
Reactivity :	Human
Category :	抗原抗体
Size :	100µg/50µg/20µg
Gene_name :	GPRIN2
Protein_name :	G protein-regulated inducer of neurite outgrowth 2
Humangene_id :	<a href="#">9721</a>
Humanswissprot_no :	<a href="#">O60269</a>
Immunogen :	The antiserum was produced against synthesized peptide derived from human GPRIN2. AA range:11-60
Specificity :	GRIN2 Polyclonal Antibody detects endogenous levels of GRIN2 protein.
Formulation :	Liquid in PBS containing 50% glycerol, 0.5% BSA and 0.02% sodium azide.
Source :	Rabbit
Dilution :	Western Blot: 1/500 - 1/2000. Immunohistochemistry: 1/100 - 1/300. ELISA: 1/40000. Not yet tested in other applications.
Purification :	The antibody was affinity-purified from rabbit antiserum by affinity-chromatography using epitope-specific immunogen.
Concentration :	1 mg/ml
Storage_stability :	-20°C/1 year
Msds :	MSDS_Antibody.pdf
Other_name :	GPRIN2; KIAA0514; G protein-regulated inducer of neurite outgrowth 2; GRIN2
Molecular Weight :	47KD

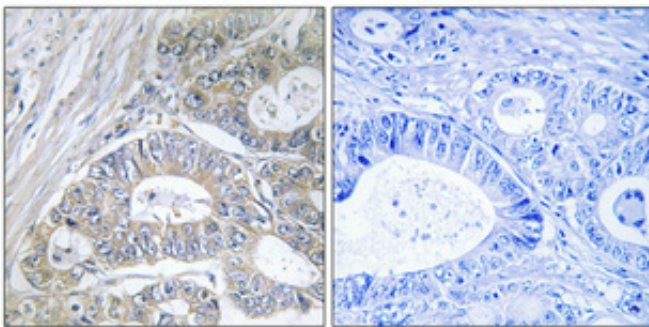
## Product Images



Western Blot analysis of various cells using GRIN2 Polyclonal Antibody



Immunohistochemical analysis of paraffin-embedded Human brain. Antibody was diluted at 1:100(4°,overnight). High-pressure and temperature Tris-EDTA,pH8.0 was used for antigen retrieval. Negative contrl (right) obtaned from antibody was pre-absorbed by immunogen peptide.



Immunohistochemical analysis of paraffin-embedded Human colon cancer. Antibody was diluted at 1:100(4°,overnight). High-pressure and temperature Tris-EDTA,pH8.0 was used for antigen retrieval. Negative contrl (right) obtaned from antibody was pre-absorbed by immunogen peptide.