

GRK 5 Polyclonal Antibody

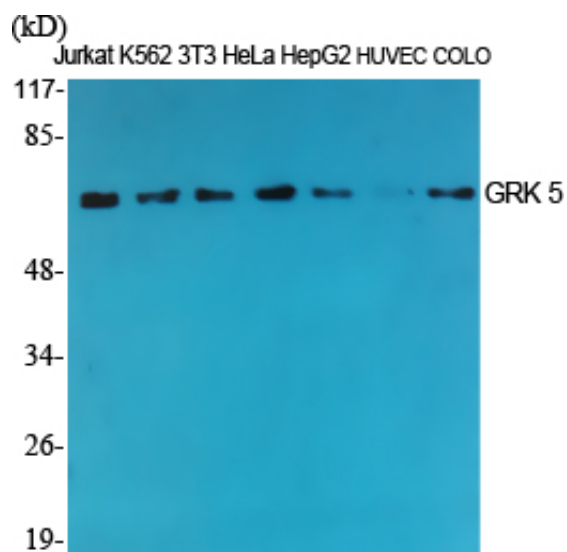
Catalog_no :	AT2070
Applications :	WB,IHC-p,ELISA
Reactivity :	Human,Mouse,Rat
Category :	抗原抗体
Size :	100µg/50µg/20µg
Gene_name :	GRK5
Protein_name :	G protein-coupled receptor kinase 5
Humangene_id :	2869
Humanswissprot_no :	P34947
Mousegene_id :	14773
Mouseswissprot_no :	Q8VEB1
Ratgene_id :	59075
Ratswissprot_no :	Q62833
Immunogen :	The antiserum was produced against synthesized peptide derived from human GRK5. AA range:351-400
Specificity :	GRK 5 Polyclonal Antibody detects endogenous levels of GRK 5 protein.
Formulation :	Liquid in PBS containing 50% glycerol, 0.5% BSA and 0.02% sodium azide.
Source :	Rabbit
Dilution :	Western Blot: 1/500 - 1/2000. Immunohistochemistry: 1/100 - 1/300. ELISA: 1/10000. Not yet tested in other applications.
Purification :	The antibody was affinity-purified from rabbit antiserum by affinity-chromatography using epitope-specific immunogen.
Concentration :	1 mg/ml
Storage_stability :	-20°C/1 year
Msds :	MSDS_Antibody.pdf



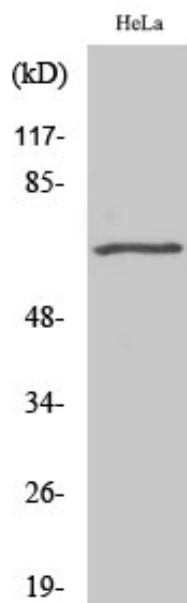
Other_name : GRK5; GPRK5; G protein-coupled receptor kinase 5; G protein-coupled receptor kinase
GRK5

Molecular Weight : 68KD

Product Images



Western Blot analysis of various cells using GRK 5 Polyclonal Antibody



Western Blot analysis of COLO205 cells using GRK 5 Polyclonal Antibody