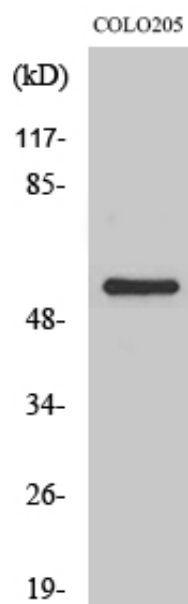


GRK 7 Polyclonal Antibody

Catalog_no :	AT2072
Applications :	WB,IF,ELISA
Reactivity :	Human
Category :	抗原抗体
Size :	100µg/50µg/20µg
Gene_name :	GRK7
Protein_name :	G protein-coupled receptor kinase 7
Humangene_id :	131890
Humanswissprot_no :	Q8WTQ7
Immunogen :	The antiserum was produced against synthesized peptide derived from human GRK7. AA range:371-420
Specificity :	GRK 7 Polyclonal Antibody detects endogenous levels of GRK 7 protein.
Formulation :	Liquid in PBS containing 50% glycerol, 0.5% BSA and 0.02% sodium azide.
Source :	Rabbit
Dilution :	Western Blot: 1/500 - 1/2000. Immunofluorescence: 1/200 - 1/1000. ELISA: 1/20000. Not yet tested in other applications.
Purification :	The antibody was affinity-purified from rabbit antiserum by affinity-chromatography using epitope-specific immunogen.
Concentration :	1 mg/ml
Storage_stability :	-20°C/1 year
Msds :	MSDS_Antibody.pdf
Other_name :	GRK7; GPRK7; G protein-coupled receptor kinase 7; G protein-coupled receptor kinase GRK7
Molecular Weight :	62KD

Product Images



Western Blot analysis of various cells using GRK 7 Polyclonal Antibody