

GRP1 Polyclonal Antibody

Catalog_no :	AT2076
Applications :	WB,ELISA
Reactivity :	Human,Mouse,Rat,Monkey
Category :	抗原抗体
Size :	100µg/50µg/20µg
Gene_name :	CYTH3
Protein_name :	Cytohesin-3
Humangene_id :	9265
Humanswissprot_no :	O43739
Mousegene_id :	19159
Mouseswissprot_no :	O08967
Ratswissprot_no :	P97696
Immunogen :	The antiserum was produced against synthesized peptide derived from human GRP1. AA range:351-400
Specificity :	GRP1 Polyclonal Antibody detects endogenous levels of GRP1 protein.
Formulation :	Liquid in PBS containing 50% glycerol, 0.5% BSA and 0.02% sodium azide.
Source :	Rabbit
Dilution :	Western Blot: 1/500 - 1/2000. ELISA: 1/10000. Not yet tested in other applications.
Purification :	The antibody was affinity-purified from rabbit antiserum by affinity-chromatography using epitope-specific immunogen.
Concentration :	1 mg/ml
Storage_stability :	-20°C/1 year
Msds :	MSDS_Antibody.pdf
Other_name :	CYTH3; ARNO3; GRP1; PSCD3; Cytohesin-3; ARF nucleotide-binding site opener 3; Protein ARNO3; General receptor of phosphoinositides 1; Grp1; PH; SEC7 and coiled-coil domain-

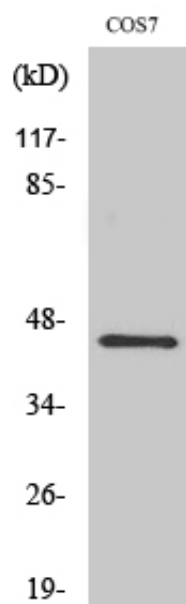


containing protein 3

Molecular
Weight :

46KD

Product Images



Western Blot analysis of various cells using GRP1 Polyclonal Antibody