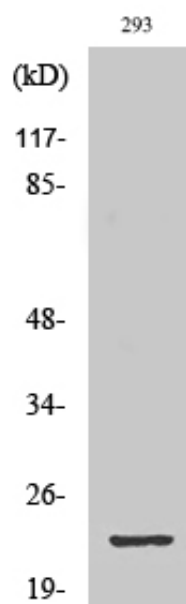




GSC2 Polyclonal Antibody

Catalog_no :	AT2079
Applications :	WB,ELISA
Reactivity :	Human,Mouse
Category :	抗原抗体
Size :	100µg/50µg/20µg
Gene_name :	GSC2
Protein_name :	Homeobox protein goosecoid-2
Humangene_id :	2928
Humanswissprot_no :	O15499
Mouseswissprot_no :	P56916
Immunogen :	The antiserum was produced against synthesized peptide derived from human GSC2. AA range:131-180
Specificity :	GSC2 Polyclonal Antibody detects endogenous levels of GSC2 protein.
Formulation :	Liquid in PBS containing 50% glycerol, 0.5% BSA and 0.02% sodium azide.
Source :	Rabbit
Dilution :	Western Blot: 1/500 - 1/2000. ELISA: 1/20000. Not yet tested in other applications.
Purification :	The antibody was affinity-purified from rabbit antiserum by affinity-chromatography using epitope-specific immunogen.
Concentration :	1 mg/ml
Storage_stability :	-20°C/1 year
Msds :	MSDS_Antibody.pdf
Other_name :	GSC2; GSCL; Homeobox protein goosecoid-2; GSC-2; Homeobox protein goosecoid-like; GSC-L
Molecular Weight :	25KD

Product Images



Western Blot analysis of various cells using GSC2 Polyclonal Antibody diluted at 1 : 1000 cells nucleus extracted by Minute TM Cytoplasmic and Nuclear Fractionation kit (SC-003, Inventbiotech, MN, USA).