

GSK3 α Polyclonal Antibody

Catalog_no :	AT2080
Applications :	WB,IHC-p,IP,ELISA
Reactivity :	Human,Mouse,Rat
Category :	抗原抗体
Size :	100 μ g/50 μ g/20 μ g
Gene_name :	GSK3A
Protein_name :	Glycogen synthase kinase-3 alpha
Humangene_id :	2931
Humanswissprot _no :	P49840
Mousegene_id :	606496
Mouseswissprot _no :	Q2NL51
Ratgene_id :	50686
Ratswissprot_no :	P18265
Immunogen :	The antiserum was produced against synthesized peptide derived from human GSK3A. AA range:10-59
Specificity :	GSK3 α Polyclonal Antibody detects endogenous levels of GSK3 α protein.
Formulation :	Liquid in PBS containing 50% glycerol, 0.5% BSA and 0.02% sodium azide.
Source :	Rabbit
Dilution :	Western Blot: 1/500 - 1/2000. Immunohistochemistry: 1/100 - 1/300. Immunoprecipitation: 2-5 ug/mg lysate. ELISA: 1/20000. Not yet tested in other applications.
Purification :	The antibody was affinity-purified from rabbit antiserum by affinity-chromatography using epitope-specific immunogen.
Concentration :	1 mg/ml
Storage_stability :	-20°C/1 year

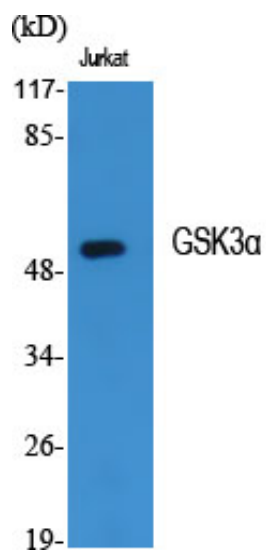


MsdS : [MSDS_Antibody.pdf](#)

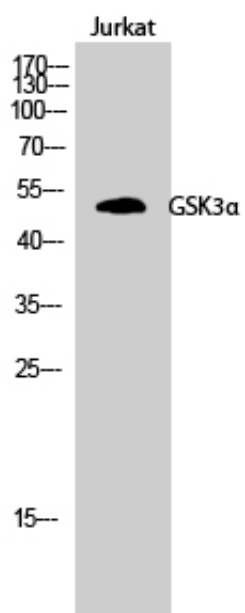
Other_name : GSK3A; Glycogen synthase kinase-3 alpha; GSK-3 alpha; Serine/threonine-protein kinase GSK3A

Molecular Weight : 51KD

Product Images



Western Blot analysis of various cells using GSK3 α Polyclonal Antibody



Western Blot analysis of Jurkat cells using GSK3 α Polyclonal Antibody