

GSK3 α / β Polyclonal Antibody

Catalog_no :	AT2081
Applications :	WB,IHC-p,ELISA
Reactivity :	Human,Mouse,Rat
Category :	抗原抗体
Size :	100 μ g/50 μ g/20 μ g
Gene_name :	GSK3A/GSK3B
Protein_name :	Glycogen synthase kinase-3 alpha/beta
Humangene_id :	2931
Humanswissprot_no :	P49840/P49841
Mousegene_id :	606496/56637
Ratgene_id :	50686/84027
Ratswissprot_no :	P18265/P18266
Immunogen :	The antiserum was produced against synthesized peptide derived from human GSK3 alpha/beta. AA range:246-295
Specificity :	GSK3 α / β Polyclonal Antibody detects endogenous levels of GSK3 α / β protein.
Formulation :	Liquid in PBS containing 50% glycerol, 0.5% BSA and 0.02% sodium azide.
Source :	Rabbit
Dilution :	Western Blot: 1/500 - 1/2000. Immunohistochemistry: 1/100 - 1/300. ELISA: 1/20000. Not yet tested in other applications.
Purification :	The antibody was affinity-purified from rabbit antiserum by affinity-chromatography using epitope-specific immunogen.
Concentration :	1 mg/ml
Storage_stability :	-20°C/1 year
Msds :	MSDS_Antibody.pdf
Other_name :	GSK3A; Glycogen synthase kinase-3 alpha; GSK-3 alpha; Serine/threonine-protein kinase GSK3A; GSK3B; Glycogen synthase kinase-3 beta; GSK-3 beta; Serine/threonine-protein

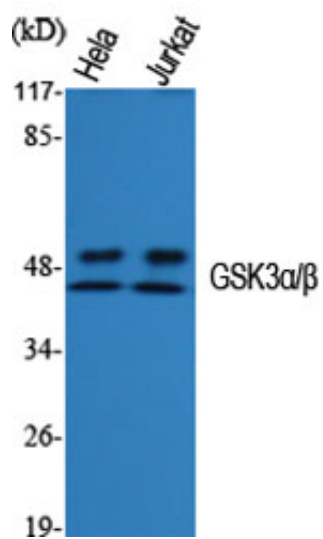


kinase GSK3B

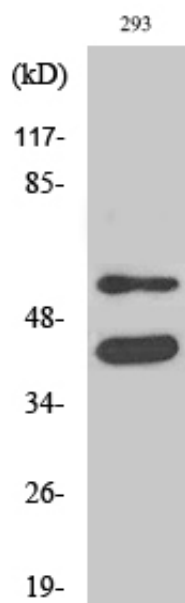
Molecular
Weight :

51KD,46KD

Product Images



Western Blot analysis of various cells using GSK3α/β Polyclonal Antibody diluted at 1 : 1000



Western Blot analysis of 293 cells using GSK3α/β Polyclonal Antibody diluted at 1 : 1000