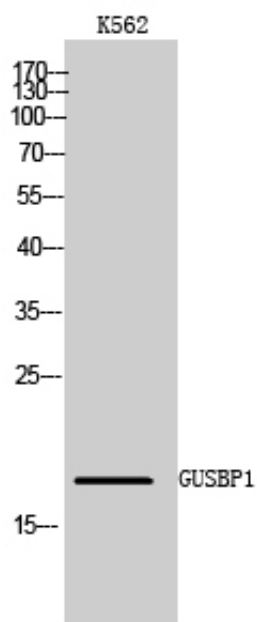


GUSBP1 Polyclonal Antibody

Catalog_no :	AT2089
Applications :	WB,ELISA
Reactivity :	Human
Category :	抗原抗体
Size :	100µg/50µg/20µg
Gene_name :	GUSBP1
Protein_name :	Putative beta-glucuronidase-like protein SMA3
Humangene_id :	153561
Humanswissprot_no :	Q15486
Immunogen :	The antiserum was produced against synthesized peptide derived from human GUSBL1. AA range:51-100
Specificity :	GUSBP1 Polyclonal Antibody detects endogenous levels of GUSBP1 protein.
Formulation :	Liquid in PBS containing 50% glycerol, 0.5% BSA and 0.02% sodium azide.
Source :	Rabbit
Dilution :	Western Blot: 1/500 - 1/2000. ELISA: 1/40000. Not yet tested in other applications.
Purification :	The antibody was affinity-purified from rabbit antiserum by affinity-chromatography using epitope-specific immunogen.
Concentration :	1 mg/ml
Storage_stability :	-20°C/1 year
Msds :	MSDS_Antibody.pdf
Other_name :	GUSBP1; SMA3; Putative beta-glucuronidase-like protein SMA3
Molecular Weight :	18KD

Product Images



Western Blot analysis of K562 cells using GUSBP1 Polyclonal Antibody