

Gz- α Polyclonal Antibody

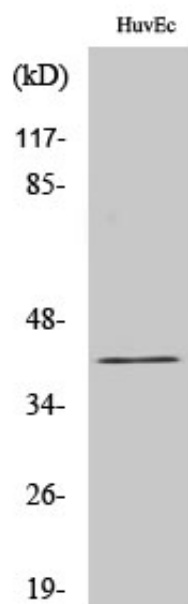
Catalog_no :	AT2090
Applications :	WB,IHC-p,ELISA
Reactivity :	Human,Mouse,Rat,Monkey
Category :	抗原抗体
Size :	100 μ g/50 μ g/20 μ g
Gene_name :	GNAZ
Protein_name :	Guanine nucleotide-binding protein G(z) subunit alpha
Humangene_id :	2781
Humanswissprot_no :	P19086
Mousegene_id :	14687
Mouseswissprot_no :	O70443
Ratgene_id :	25740
Ratswissprot_no :	P19627
Immunogen :	The antiserum was produced against synthesized peptide derived from human Gz-alpha. AA range:1-50
Specificity :	Gz- α Polyclonal Antibody detects endogenous levels of Gz- α protein.
Formulation :	Liquid in PBS containing 50% glycerol, 0.5% BSA and 0.02% sodium azide.
Source :	Rabbit
Dilution :	Western Blot: 1/500 - 1/2000. Immunohistochemistry: 1/100 - 1/300. ELISA: 1/40000. Not yet tested in other applications.
Purification :	The antibody was affinity-purified from rabbit antiserum by affinity-chromatography using epitope-specific immunogen.
Concentration :	1 mg/ml
Storage_stability :	-20°C/1 year
Msds :	MSDS_Antibody.pdf



Other_name : GNAZ; Guanine nucleotide-binding protein G(z) subunit alpha; G(x) alpha chain; Gz-alpha

Molecular Weight : 41KD

Product Images



Western Blot analysis of various cells using Gz- α Polyclonal Antibody