

Gα olf Polyclonal Antibody

Catalog_no :	<u>AT2093</u>
Applications :	<u>WB,IHC-p,ELISA</u>
Reactivity :	<u>Human,Mouse,Rat</u>
Category :	<u>抗原抗体</u>
Size :	<u>100μg/50μg/20μg</u>
Gene_name :	<u>GNAL</u>
Protein_name :	<u>Guanine nucleotide-binding protein G(olf) subunit alpha</u>
Humangene_id :	<u>2774</u>
Humanswissprot_no :	<u>P38405</u>
Mousegene_id :	<u>14680</u>
Mouseswissprot_no :	<u>Q8CGK7</u>
Ratswissprot_no :	<u>P38406</u>
Immunogen :	<u>The antiserum was produced against synthesized peptide derived from human GNAL. AA range:41-90</u>
Specificity :	<u>Gα olf Polyclonal Antibody detects endogenous levels of Gα olf protein.</u>
Formulation :	<u>Liquid in PBS containing 50% glycerol, 0.5% BSA and 0.02% sodium azide.</u>
Source :	<u>Rabbit</u>
Dilution :	<u>Western Blot: 1/500 - 1/2000. Immunohistochemistry: 1/100 - 1/300. ELISA: 1/20000. Not yet tested in other applications.</u>
Purification :	<u>The antibody was affinity-purified from rabbit antiserum by affinity-chromatography using epitope-specific immunogen.</u>
Concentration :	<u>1 mg/ml</u>
Storage_stability :	<u>-20°C/1 year</u>
Msds :	<u>MSDS_Antibody.pdf</u>
Other_name :	<u>GNAL; Guanine nucleotide-binding protein G(olf) subunit alpha; Adenylate cyclase-</u>

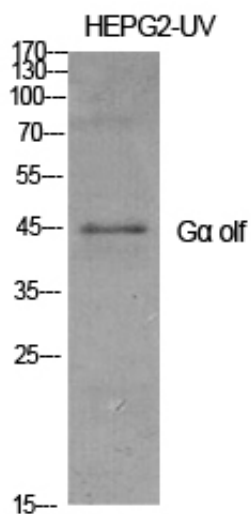


stimulating G alpha protein; olfactory type

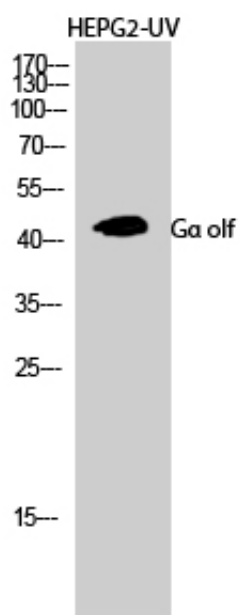
Molecular
Weight :

40KD

Product Images



Western Blot analysis of various cells using Ga olf Polyclonal Antibody diluted at 1 : 1000



Western Blot analysis of HEPG2-UV cells using Ga olf Polyclonal Antibody diluted at 1 : 1000