

Gβ 5 Polyclonal Antibody

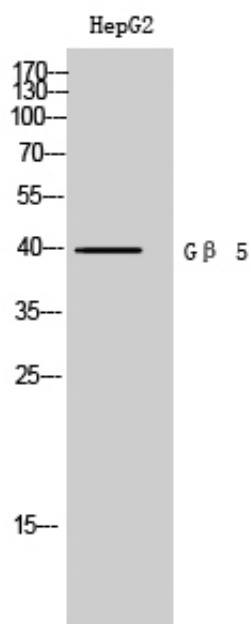
Catalog_no :	AT2096
Applications :	WB,IHC-p,ELISA
Reactivity :	Human,Mouse,Rat
Category :	抗原抗体
Size :	100μg/50μg/20μg
Gene_name :	GNB5
Protein_name :	Guanine nucleotide-binding protein subunit beta-5
Humangene_id :	10681
Humanswissprot_no :	O14775
Mousegene_id :	14697
Mouseswissprot_no :	P62881
Ratgene_id :	83579
Ratswissprot_no :	P62882
Immunogen :	The antiserum was produced against synthesized peptide derived from human GNB5. AA range:151-200
Specificity :	Gβ 5 Polyclonal Antibody detects endogenous levels of Gβ 5 protein.
Formulation :	Liquid in PBS containing 50% glycerol, 0.5% BSA and 0.02% sodium azide.
Source :	Rabbit
Dilution :	Western Blot: 1/500 - 1/2000. Immunohistochemistry: 1/100 - 1/300. ELISA: 1/40000. Not yet tested in other applications.
Purification :	The antibody was affinity-purified from rabbit antiserum by affinity-chromatography using epitope-specific immunogen.
Concentration :	1 mg/ml
Storage_stability :	-20°C/1 year
Msds :	MSDS_Antibody.pdf



Other_name : GNB5; Guanine nucleotide-binding protein subunit beta-5; Gbeta5; Transducin beta chain 5

Molecular Weight : 40KD

Product Images



Western Blot analysis of HepG2 cells using Gβ 5 Polyclonal Antibody cells nucleus extracted by Minute TM Cytoplasmic and Nuclear Fractionation kit (SC-003, Inventbiotech, MN, USA).