

HBP1 Polyclonal Antibody

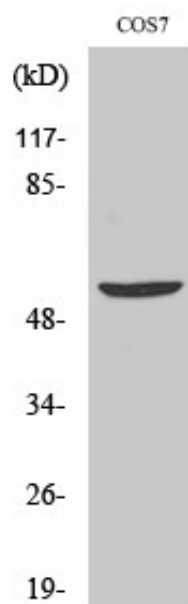
Catalog_no :	AT2103
Applications :	WB,IHC-p,ELISA
Reactivity :	Human,Mouse,Rat,Monkey
Category :	抗原抗体
Size :	100µg/50µg/20µg
Gene_name :	HBP1
Protein_name :	HMG box-containing protein 1
Humangene_id :	26959
Humanswissprot_no :	O60381
Mousegene_id :	73389
Mouseswissprot_no :	Q8R316
Ratgene_id :	27080
Ratswissprot_no :	Q62661
Immunogen :	The antiserum was produced against synthesized peptide derived from human HBP1. AA range:431-480
Specificity :	HBP1 Polyclonal Antibody detects endogenous levels of HBP1 protein.
Formulation :	Liquid in PBS containing 50% glycerol, 0.5% BSA and 0.02% sodium azide.
Source :	Rabbit
Dilution :	Western Blot: 1/500 - 1/2000. Immunohistochemistry: 1/100 - 1/300. ELISA: 1/10000. Not yet tested in other applications.
Purification :	The antibody was affinity-purified from rabbit antiserum by affinity-chromatography using epitope-specific immunogen.
Concentration :	1 mg/ml
Storage_stability :	-20°C/1 year
Msds :	MSDS_Antibody.pdf



Other_name : HBP1; HMG box-containing protein 1; HMG box transcription factor 1; High mobility group box transcription factor 1

Molecular Weight : 57KD

Product Images



Western Blot analysis of various cells using HBP1 Polyclonal Antibody cells nucleus extracted by Minute TM Cytoplasmic and Nuclear Fractionation kit (SC-003, Inventbiotech, MN, USA).