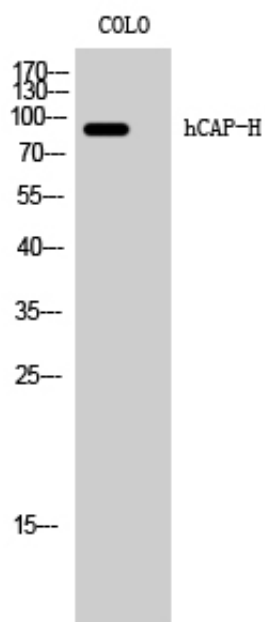


hCAP-H Polyclonal Antibody

Catalog_no :	AT2106
Applications :	WB,ELISA
Reactivity :	Human
Category :	抗原抗体
Size :	100µg/50µg/20µg
Gene_name :	NCAPH
Protein_name :	Condensin complex subunit 2
Humangene_id :	23397
Humanswissprot_no :	Q15003
Immunogen :	The antiserum was produced against synthesized peptide derived from human NCAPH. AA range:441-490
Specificity :	hCAP-H Polyclonal Antibody detects endogenous levels of hCAP-H protein.
Formulation :	Liquid in PBS containing 50% glycerol, 0.5% BSA and 0.02% sodium azide.
Source :	Rabbit
Dilution :	Western Blot: 1/500 - 1/2000. ELISA: 1/40000. Not yet tested in other applications.
Purification :	The antibody was affinity-purified from rabbit antiserum by affinity-chromatography using epitope-specific immunogen.
Concentration :	1 mg/ml
Storage_stability :	-20°C/1 year
Msds :	MSDS_Antibody.pdf
Other_name :	NCAPH; BRRN; BRRN1; CAPH; KIAA0074; Condensin complex subunit 2; Barren homolog protein 1; Chromosome-associated protein H; hCAP-H; Non-SMC condensin I complex subunit H; XCAP-H homolog
Molecular Weight :	83KD

Product Images



Western Blot analysis of COLO cells using hCAP-H Polyclonal Antibody