

## Hck Polyclonal Antibody

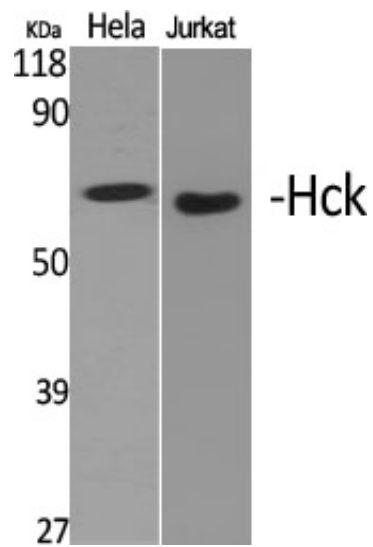
Catalog_no :	AT2110
Applications :	WB,IHC-p,IF,ELISA
Reactivity :	Human,Mouse,Rat
Category :	抗原抗体
Size :	100µg/50µg/20µg
Gene_name :	HCK
Protein_name :	Tyrosine-protein kinase HCK
Humangene_id :	<a href="#">3055</a>
Humanswissprot_no :	<a href="#">P08631</a>
Mousegene_id :	<a href="#">15162</a>
Mouseswissprot_no :	<a href="#">P08103</a>
Ratgene_id :	<a href="#">25734</a>
Ratswissprot_no :	<a href="#">P50545</a>
Immunogen :	The antiserum was produced against synthesized peptide derived from human HCK. AA range:381-430
Specificity :	Hck Polyclonal Antibody detects endogenous levels of Hck protein.
Formulation :	Liquid in PBS containing 50% glycerol, 0.5% BSA and 0.02% sodium azide.
Source :	Rabbit
Dilution :	Immunohistochemistry: 1/100 - 1/300. Immunofluorescence: 1/200 - 1/1000. ELISA: 1/5000. Not yet tested in other applications.
Purification :	The antibody was affinity-purified from rabbit antiserum by affinity-chromatography using epitope-specific immunogen.
Concentration :	1 mg/ml
Storage_stability :	-20°C/1 year
Msds :	MSDS_Antibody.pdf



Other\_name : HCK; Tyrosine-protein kinase HCK; Hematopoietic cell kinase; Hemopoietic cell kinase;  
p59-HCK/p60-HCK; p59Hck; p61Hck

---

## Product Images



Western Blot analysis of various cells using Hck Polyclonal Antibody