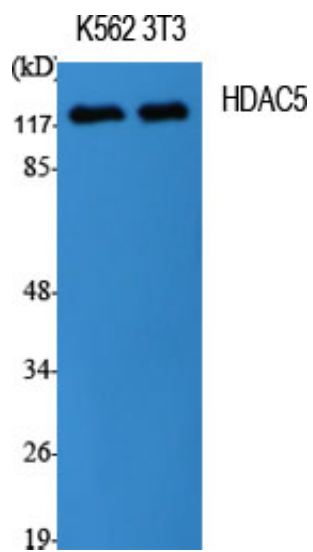


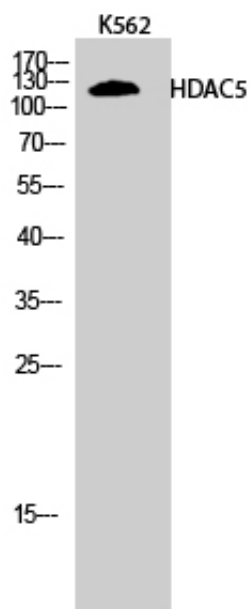
HDAC5 Polyclonal Antibody

Catalog_no :	AT2116
Applications :	WB,IHC-p,IF,ELISA
Reactivity :	Human,Mouse
Category :	抗原抗体
Size :	100µg/50µg/20µg
Gene_name :	HDAC5
Protein_name :	Histone deacetylase 5
Humangene_id	10014
:	
Humanswissprot	Q9UQL6
_no :	
Mouseswissprot	Q9Z2V6
_no :	
Immunogen :	The antiserum was produced against synthesized peptide derived from human HDAC5. AA range:464-513
Specificity :	HDAC5 Polyclonal Antibody detects endogenous levels of HDAC5 protein.
Formulation :	Liquid in PBS containing 50% glycerol, 0.5% BSA and 0.02% sodium azide.
Source :	Rabbit
Dilution :	Western Blot: 1/500 - 1/2000. Immunohistochemistry: 1/100 - 1/300. Immunofluorescence: 1/200 - 1/1000. ELISA: 1/20000. Not yet tested in other applications.
Purification :	The antibody was affinity-purified from rabbit antiserum by affinity-chromatography using epitope-specific immunogen.
Concentration :	1 mg/ml
Storage_stability	-20°C/1 year
:	
Msds :	MSDS_Antibody.pdf
Other_name :	HDAC5; KIAA0600; Histone deacetylase 5; HD5; Antigen NY-CO-9
Molecular Weight :	122KD

Product Images



Western Blot analysis of various cells using HDAC5 Polyclonal Antibody



Western Blot analysis of K562 cells using HDAC5 Polyclonal Antibody