

Hec1 Polyclonal Antibody

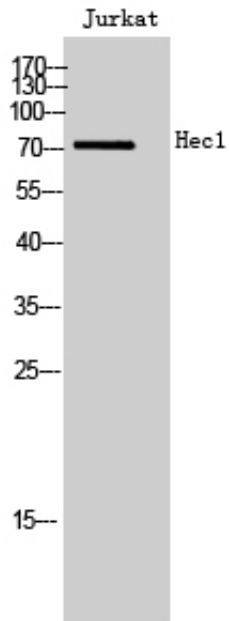
Catalog_no :	AT2121
Applications :	WB,IF,ELISA
Reactivity :	Human,Mouse
Category :	抗原抗体
Size :	100µg/50µg/20µg
Gene_name :	NDC80
Protein_name :	Kinetochore protein NDC80 homolog
Humangene_id :	10403
Humanswissprot_no :	O14777
Mousegene_id :	67052
Mouseswissprot_no :	Q9D0F1
Immunogen :	The antiserum was produced against synthesized peptide derived from human KNTC2. AA range:351-400
Specificity :	Hec1 Polyclonal Antibody detects endogenous levels of Hec1 protein.
Formulation :	Liquid in PBS containing 50% glycerol, 0.5% BSA and 0.02% sodium azide.
Source :	Rabbit
Dilution :	Western Blot: 1/500 - 1/2000. Immunofluorescence: 1/200 - 1/1000. ELISA: 1/20000. Not yet tested in other applications.
Purification :	The antibody was affinity-purified from rabbit antiserum by affinity-chromatography using epitope-specific immunogen.
Concentration :	1 mg/ml
Storage_stability :	-20°C/1 year
Msds :	MSDS_Antibody.pdf
Other_name :	NDC80; HEC; HEC1; KNTC2; Kinetochore protein NDC80 homolog; Highly expressed in cancer protein; Kinetochore protein Hec1; HsHec1; Kinetochore-associated protein 2; Retinoblastoma-associated protein HEC



Molecular
Weight :

73KD

Product Images



Western Blot analysis of Jurkat cells using Hec1 Polyclonal Antibody cells nucleus extracted by Minute TM Cytoplasmic and Nuclear Fractionation kit (SC-003, Inventbiotech, MN, USA).