

## Hel-N1 Polyclonal Antibody

Catalog_no :	AT2124
Applications :	WB,ELISA
Reactivity :	Human,Mouse,Rat
Category :	抗原抗体
Size :	100µg/50µg/20µg
Gene_name :	ELAVL2
Protein_name :	ELAV-like protein 2
Humangene_id :	<a href="#">1993</a>
Humanswissprot_no :	<a href="#">Q12926</a>
Mousegene_id :	<a href="#">15569</a>
Mouseswissprot_no :	<a href="#">Q60899</a>
Ratswissprot_no :	<a href="#">Q8CH84</a>
Immunogen :	The antiserum was produced against synthesized peptide derived from human ELAVL2. AA range:11-60
Specificity :	Hel-N1 Polyclonal Antibody detects endogenous levels of Hel-N1 protein.
Formulation :	Liquid in PBS containing 50% glycerol, 0.5% BSA and 0.02% sodium azide.
Source :	Rabbit
Dilution :	Western Blot: 1/500 - 1/2000. ELISA: 1/20000. Not yet tested in other applications.
Purification :	The antibody was affinity-purified from rabbit antiserum by affinity-chromatography using epitope-specific immunogen.
Concentration :	1 mg/ml
Storage_stability :	-20°C/1 year
Msds :	<a href="#">MSDS_Antibody.pdf</a>
Other_name :	ELAVL2; HUB; ELAV-like protein 2; ELAV-like neuronal protein 1; Hu-antigen B; HuB; Nervous system-specific RNA-binding protein Hel-N1

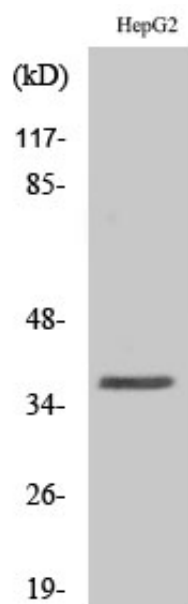


Molecular  
Weight :

38KD

---

## Product Images



Western Blot analysis of various cells using Hel-N1 Polyclonal Antibody