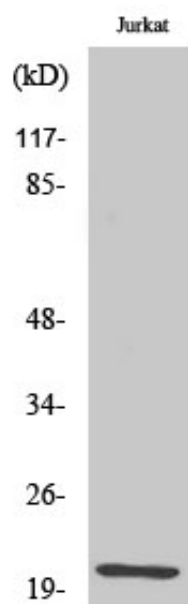




## HEN1/2 Polyclonal Antibody

Catalog_no :	AT2125
Applications :	WB,IHC-p,ELISA
Reactivity :	Human,Mouse
Category :	抗原抗体
Size :	100µg/50µg/20µg
Gene_name :	HEN1/HEN2
Protein_name :	Helix-loop-helix protein 1
Humangene_id :	<a href="#">4807/4808</a>
Humanswissprot_no :	<a href="#">Q02575/Q02577</a>
Mousegene_id :	<a href="#">18071/18072</a>
Immunogen :	The antiserum was produced against synthesized peptide derived from human HEN1/2. AA range:41-90
Specificity :	HEN1/2 Polyclonal Antibody detects endogenous levels of HEN1/2 protein.
Formulation :	Liquid in PBS containing 50% glycerol, 0.5% BSA and 0.02% sodium azide.
Source :	Rabbit
Dilution :	Western Blot: 1/500 - 1/2000. Immunohistochemistry: 1/100 - 1/300. ELISA: 1/10000. Not yet tested in other applications.
Purification :	The antibody was affinity-purified from rabbit antiserum by affinity-chromatography using epitope-specific immunogen.
Concentration :	1 mg/ml
Storage_stability :	-20°C/1 year
Msds :	<a href="#">MSDS_Antibody.pdf</a>
Other_name :	NHLH1; BHLHA35; HEN1; Helix-loop-helix protein 1; HEN-1; Class A basic helix-loop-helix protein 35; bHLHa35; Nescient helix loop helix 1; NSCL-1; NHLH2; BHLHA34; HEN2; KIAA0490; Helix-loop-helix protein 2; HEN-2; Class A basic helix-loop-he
Molecular Weight :	19KD

## Product Images



Western Blot analysis of various cells using HEN1/2 Polyclonal Antibody diluted at 1 : 1000 cells nucleus extracted by Minute TM Cytoplasmic and Nuclear Fractionation kit (SC-003, Invent biotech, MN, USA).