

Hexim1 Polyclonal Antibody

Catalog_no :	AT2129
Applications :	WB,IHC-p,IF,ELISA
Reactivity :	Human,Mouse,Rat
Category :	抗原抗体
Size :	100µg/50µg/20µg
Gene_name :	HEXIM1
Protein_name :	Protein HEXIM1
Humangene_id :	10614
Humanswissprot_no :	O94992
Mousegene_id :	192231
Mouseswissprot_no :	Q8R409
Ratgene_id :	498008
Ratswissprot_no :	Q5M9G1
Immunogen :	The antiserum was produced against synthesized peptide derived from human HEXIM1. AA range:181-230
Specificity :	Hexim1 Polyclonal Antibody detects endogenous levels of Hexim1 protein.
Formulation :	Liquid in PBS containing 50% glycerol, 0.5% BSA and 0.02% sodium azide.
Source :	Rabbit
Dilution :	Western Blot: 1/500 - 1/2000. Immunohistochemistry: 1/100 - 1/300. Immunofluorescence: 1/200 - 1/1000. ELISA: 1/10000. Not yet tested in other applications.
Purification :	The antibody was affinity-purified from rabbit antiserum by affinity-chromatography using epitope-specific immunogen.
Concentration :	1 mg/ml
Storage_stability :	-20°C/1 year

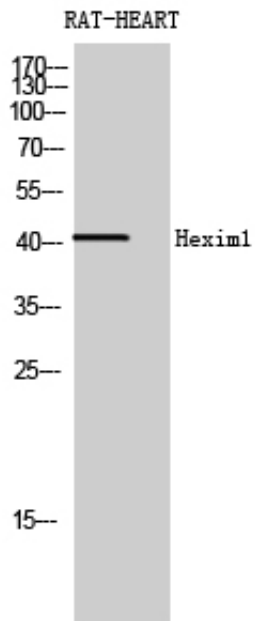


Msd : MSDS_Antibody.pdf

Other_name : HEXIM1; CLP1; EDG1; HIS1; MAQ1; Protein HEXIM1; Cardiac lineage protein 1; Estrogen down-regulated gene 1 protein; Hexamethylene bis-acetamide-inducible protein 1; Menage a quatre protein 1

Molecular Weight : 40KD

Product Images



Western Blot analysis of RAT-HEART cells using Hexim1 Polyclonal Antibody diluted at 1 : 2000