

HIPK4 Polyclonal Antibody

Catalog_no :	AT2137
Applications :	WB,IHC-p,IF,ELISA
Reactivity :	Human,Mouse,Rat
Category :	抗原抗体
Size :	100µg/50µg/20µg
Gene_name :	HIPK4
Protein_name :	Homeodomain-interacting protein kinase 4
Humangene_id :	147746
Humanswissprot_no :	Q8NE63
Mousegene_id :	233020
Mouseswissprot_no :	Q3V016
Ratgene_id :	308449
Ratswissprot_no :	Q4V793
Immunogen :	The antiserum was produced against synthesized peptide derived from human HIPK4. AA range:511-560
Specificity :	HIPK4 Polyclonal Antibody detects endogenous levels of HIPK4 protein.
Formulation :	Liquid in PBS containing 50% glycerol, 0.5% BSA and 0.02% sodium azide.
Source :	Rabbit
Dilution :	Western Blot: 1/500 - 1/2000. Immunohistochemistry: 1/100 - 1/300. Immunofluorescence: 1/200 - 1/1000. ELISA: 1/20000. Not yet tested in other applications.
Purification :	The antibody was affinity-purified from rabbit antiserum by affinity-chromatography using epitope-specific immunogen.
Concentration :	1 mg/ml
Storage_stability :	-20°C/1 year

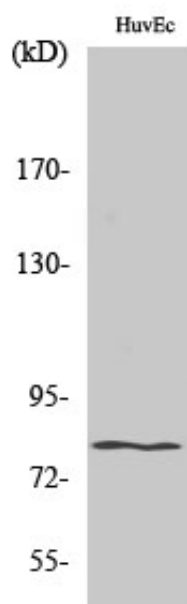


Msd : MSDS_Antibody.pdf

Other_name : HIPK4; Homeodomain-interacting protein kinase 4

Molecular Weight : 70KD

Product Images



Western Blot analysis of various cells using HIPK4 Polyclonal Antibody