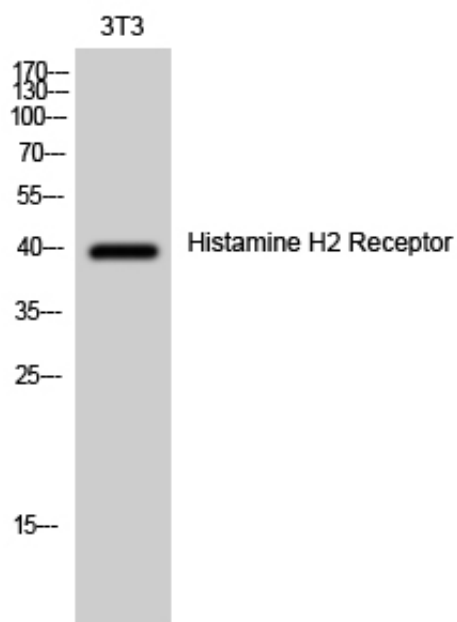


## Histamine H2 Receptor Polyclonal Antibody

Catalog_no :	AT2141
Applications :	WB,IF,ELISA
Reactivity :	Human
Category :	抗原抗体
Size :	100µg/50µg/20µg
Gene_name :	HRH2
Protein_name :	Histamine H2 receptor
Humangene_id :	<a href="#">3274</a>
Humanswissprot_no :	<a href="#">P25021</a>
Immunogen :	The antiserum was produced against synthesized peptide derived from human HRH2. AA range:131-180
Specificity :	Histamine H2 Receptor Polyclonal Antibody detects endogenous levels of Histamine H2 Receptor protein.
Formulation :	Liquid in PBS containing 50% glycerol, 0.5% BSA and 0.02% sodium azide.
Source :	Rabbit
Dilution :	Western Blot: 1/500 - 1/2000. Immunofluorescence: 1/200 - 1/1000. ELISA: 1/5000. Not yet tested in other applications.
Purification :	The antibody was affinity-purified from rabbit antiserum by affinity-chromatography using epitope-specific immunogen.
Concentration :	1 mg/ml
Storage_stability :	-20°C/1 year
Msds :	MSDS_Antibody.pdf
Other_name :	HRH2; Histamine H2 receptor; H2R; HH2R; Gastric receptor I
Molecular Weight :	40KD

## Product Images



Western Blot analysis of 3T3 cells using Histamine H2 Receptor Polyclonal Antibody