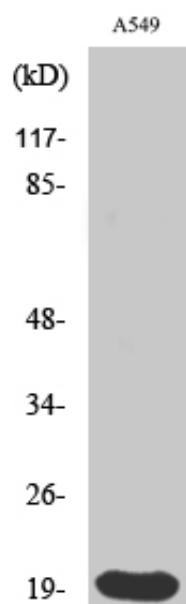




Histone 1.0 Polyclonal Antibody

Catalog_no :	AT2144
Applications :	WB,IHC-p,ELISA
Reactivity :	Human
Category :	抗原抗体
Size :	100µg/50µg/20µg
Gene_name :	H1F0
Protein_name :	Histone H1.0
Humangene_id :	3005
Humanswissprot_no :	P07305
Immunogen :	The antiserum was produced against synthesized peptide derived from human Histone 1F0. AA range:71-120
Specificity :	Histone 1.0 Polyclonal Antibody detects endogenous levels of Histone 1.0 protein.
Formulation :	Liquid in PBS containing 50% glycerol, 0.5% BSA and 0.02% sodium azide.
Source :	Rabbit
Dilution :	Western Blot: 1/500 - 1/2000. Immunohistochemistry: 1/100 - 1/300. ELISA: 1/40000. Not yet tested in other applications.
Purification :	The antibody was affinity-purified from rabbit antiserum by affinity-chromatography using epitope-specific immunogen.
Concentration :	1 mg/ml
Storage_stability :	-20°C/1 year
Msds :	MSDS_Antibody.pdf
Other_name :	H1F0; H1FV; Histone H1.0; Histone H1'; Histone H1(0)
Molecular Weight :	20KD

Product Images



Western Blot analysis of various cells using Histone 1.0 Polyclonal Antibody diluted at 1 : 2000