

Histone deacetylase 1 Polyclonal Antibody

| | |
|---------------------|--|
| Catalog_no : | AT2145 |
| Applications : | WB,IHC-p,IF,ELISA |
| Reactivity : | Human,Mouse,Rat |
| Category : | 抗原抗体 |
| Size : | 100µg/50µg/20µg |
| Gene_name : | HDAC1 |
| Protein_name : | Histone deacetylase 1 |
| Humangene_id : | 3065 |
| Humanswissprot_no : | Q13547 |
| Mousegene_id : | 433759 |
| Mouseswissprot_no : | O09106 |
| Ratgene_id : | 297893 |
| Ratswissprot_no : | Q4QQW4 |
| Immunogen : | The antiserum was produced against synthesized peptide derived from human HDAC1. AA range:433-482 |
| Specificity : | Histone deacetylase 1 Polyclonal Antibody detects endogenous levels of Histone deacetylase 1 protein. |
| Formulation : | Liquid in PBS containing 50% glycerol, 0.5% BSA and 0.02% sodium azide. |
| Source : | Rabbit |
| Dilution : | Western Blot: 1/500 - 1/2000. Immunohistochemistry: 1/100 - 1/300. Immunofluorescence: 1/200 - 1/1000. ELISA: 1/10000. Not yet tested in other applications. |
| Purification : | The antibody was affinity-purified from rabbit antiserum by affinity-chromatography using epitope-specific immunogen. |
| Concentration : | 1 mg/ml |
| Storage_stability : | -20°C/1 year |

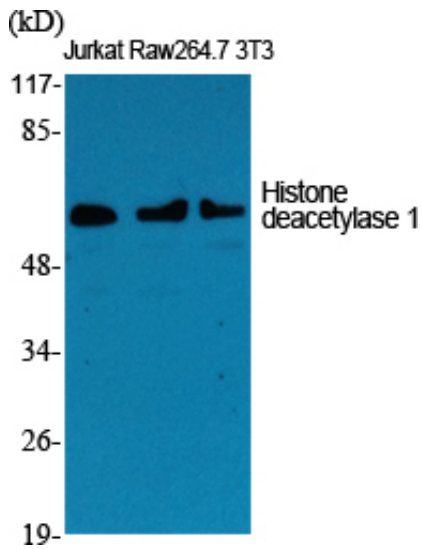


Msd : MSDS_Antibody.pdf

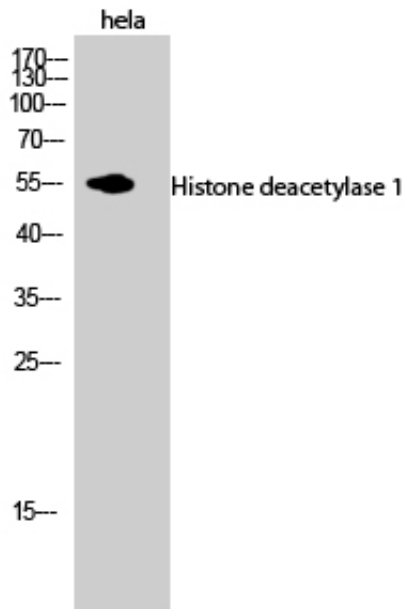
Other_name : HDAC1; RPD3L1; Histone deacetylase 1; HD1

Molecular Weight : 55KD

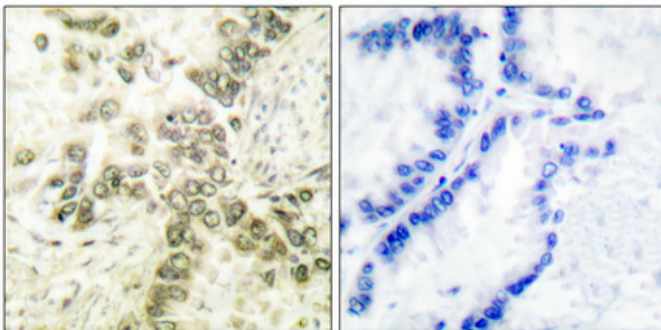
Product Images



Western Blot analysis of various cells using Histone deacetylase 1 Polyclonal Antibody diluted at 1 : 1000



Western Blot analysis of hela cells using Histone deacetylase 1 Polyclonal Antibody diluted at 1 : 1000



Immunohistochemical analysis of paraffin-embedded Human lung cancer. Antibody was diluted at 1:100(4°, overnight). High-pressure and temperature Tris-EDTA, pH8.0 was used for antigen retrieval. Negative control (right) obtained from antibody was pre-absorbed by immunogen peptide.

Immunohistochemical analysis of paraffin-embedded Human lung cancer. Antibody was diluted at 1:100(4°, overnight). High-pressure and temperature Tris-EDTA, pH8.0 was used for antigen retrieval. Negative control (right) obtained from antibody was pre-absorbed by immunogen peptide.

