

Histone deacetylase 10 Polyclonal Antibody

Catalog_no :	AT2146
Applications :	WB,IHC-p,ELISA
Reactivity :	Human,Mouse,Rat,Monkey
Category :	抗原抗体
Size :	100µg/50µg/20µg
Gene_name :	HDAC10
Protein_name :	Histone deacetylase 10
Humangene_id :	83933
Humanswissprot_no :	Q969S8
Mousegene_id :	170787
Mouseswissprot_no :	Q6P3E7
Ratgene_id :	362981
Ratswissprot_no :	Q569C4
Immunogen :	The antiserum was produced against synthesized peptide derived from human HDAC10. AA range:10-59
Specificity :	Histone deacetylase 10 Polyclonal Antibody detects endogenous levels of Histone deacetylase 10 protein.
Formulation :	Liquid in PBS containing 50% glycerol, 0.5% BSA and 0.02% sodium azide.
Source :	Rabbit
Dilution :	Western Blot: 1/500 - 1/2000. Immunohistochemistry: 1/100 - 1/300. ELISA: 1/10000. Not yet tested in other applications.
Purification :	The antibody was affinity-purified from rabbit antiserum by affinity-chromatography using epitope-specific immunogen.
Concentration :	1 mg/ml
Storage_stability :	-20°C/1 year

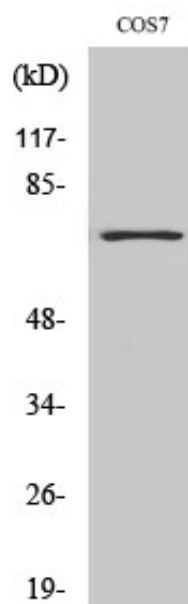


Msd : MSDS_Antibody.pdf

Other_name : HDAC10; Histone deacetylase 10; HD10

Molecular Weight : 75KD

Product Images



Western Blot analysis of various cells using Histone deacetylase 10 Polyclonal Antibody diluted at 1 : 1000