

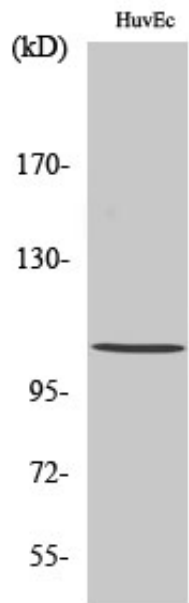
Histone deacetylase 7a Polyclonal Antibody

Catalog_no :	AT2148
Applications :	WB,IHC-p,ELISA
Reactivity :	Human,Mouse
Category :	抗原抗体
Size :	100µg/50µg/20µg
Gene_name :	HDAC7
Protein_name :	Histone deacetylase 7
Humangene_id :	51564
Humanswissprot_no :	Q8WUJ4
Mousegene_id :	56233
Mouseswissprot_no :	Q8C2B3
Immunogen :	The antiserum was produced against synthesized peptide derived from human HDAC7. AA range:901-950
Specificity :	Histone deacetylase 7a Polyclonal Antibody detects endogenous levels of Histone deacetylase 7a protein.
Formulation :	Liquid in PBS containing 50% glycerol, 0.5% BSA and 0.02% sodium azide.
Source :	Rabbit
Dilution :	Western Blot: 1/500 - 1/2000. Immunohistochemistry: 1/100 - 1/300. ELISA: 1/10000. Not yet tested in other applications.
Purification :	The antibody was affinity-purified from rabbit antiserum by affinity-chromatography using epitope-specific immunogen.
Concentration :	1 mg/ml
Storage_stability :	-20°C/1 year
Msds :	MSDS_Antibody.pdf
Other_name :	HDAC7; HDAC7A; Histone deacetylase 7; HD7; Histone deacetylase 7A; HD7a
Molecular	105KD



Weight :

Product Images



Western Blot analysis of various cells using Histone deacetylase 7a Polyclonal Antibody