



## Histone H1 Polyclonal Antibody

Catalog_no :	<u>AT2150</u>
Applications :	<u>WB,IHC-p,IF,ELISA</u>
Reactivity :	<u>Human,Mouse</u>
Category :	<u>抗原抗体</u>
Size :	<u>100µg/50µg/20µg</u>
Gene_name :	<u>HIST1H1B</u>
Protein_name :	<u>Histone H1.5</u>
Humangene_id :	<u><a href="#">3009/3007/3008</a></u>
Humanswissprot_no :	<u><a href="#">P16401/P16402/P10412</a></u>
Mousegene_id :	<u><a href="#">56702/14957/50709</a></u>
Immunogen :	<u>The antiserum was produced against synthesized peptide derived from human Histone H1. AA range:1-50</u>
Specificity :	<u>Histone H1 Polyclonal Antibody detects endogenous levels of Histone H1 protein.</u>
Formulation :	<u>Liquid in PBS containing 50% glycerol, 0.5% BSA and 0.02% sodium azide.</u>
Source :	<u>Rabbit</u>
Dilution :	<u>Western Blot: 1/500 - 1/2000. Immunohistochemistry: 1/100 - 1/300. Immunofluorescence: 1/200 - 1/1000. ELISA: 1/20000. Not yet tested in other applications.</u>
Purification :	<u>The antibody was affinity-purified from rabbit antiserum by affinity-chromatography using epitope-specific immunogen.</u>
Concentration :	<u>1 mg/ml</u>
Storage_stability :	<u>-20°C/1 year</u>
Msds :	<u>MSDS_Antibody.pdf</u>
Other_name :	<u>HIST1H1B; H1F5; Histone H1.5; Histone H1a; Histone H1b; Histone H1s-3; HIST1H1D; H1F3; Histone H1.3; Histone H1c; Histone H1s-2; HIST1H1E; H1F4; Histone H1.4; Histone H1b; Histone H1s-4</u>
Molecular Weight :	<u>31KD</u>

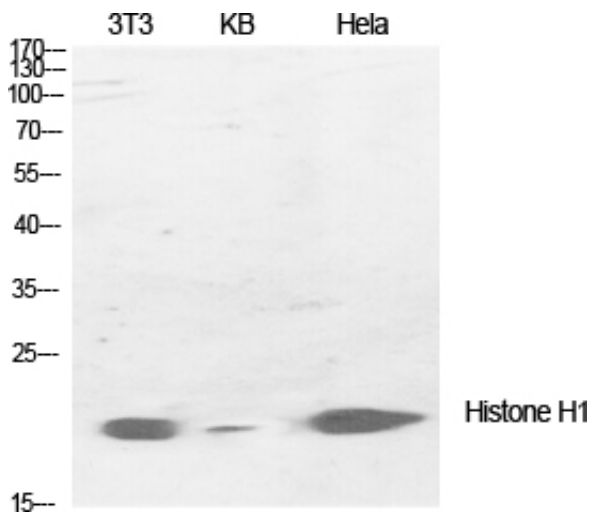


**专注二抗产品**

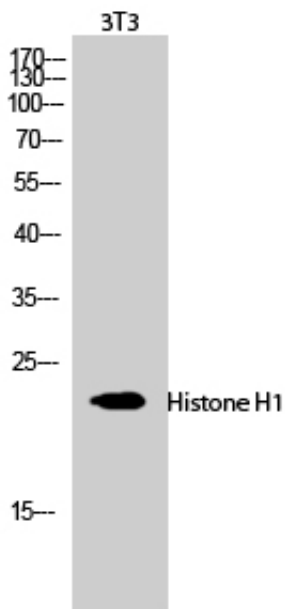
Biodragon旗下品牌

---

## Product Images



Western Blot analysis of various cells using Histone H1 Polyclonal Antibody diluted at 1 : 1000 cells nucleus extracted by Minute TM Cytoplasmic and Nuclear Fractionation kit (SC-003, Inventbiotech, MN, USA).



Western Blot analysis of 3T3 cells using Histone H1 Polyclonal Antibody diluted at 1 : 1000 cells nucleus extracted by Minute TM Cytoplasmic and Nuclear Fractionation kit (SC-003, Inventbiotech, MN, USA).