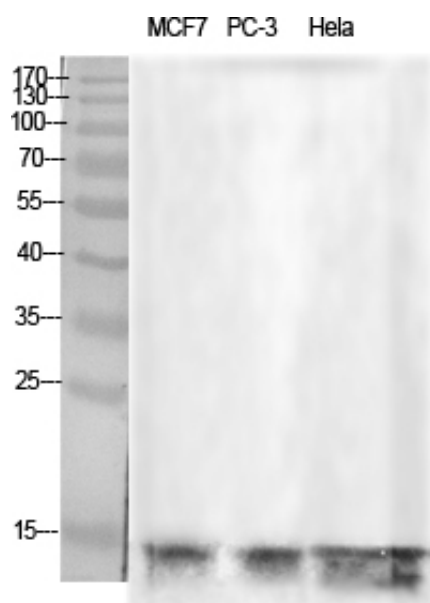


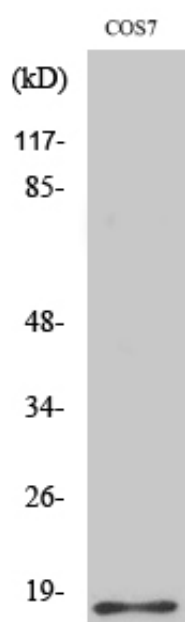
Histone H2B Polyclonal Antibody

Catalog_no :	AT2157
Applications :	WB,IHC-p,IF,ELISA
Reactivity :	Human,Mouse,Monkey
Category :	抗原抗体
Size :	100µg/50µg/20µg
Gene_name :	H2BFS
Protein_name :	Histone H2B type F-S
Humangene_id :	54145
Humanswissprot_no :	P57053
Immunogen :	The antiserum was produced against synthesized peptide derived from human Histone H2B. AA range:10-59
Specificity :	Histone H2B Polyclonal Antibody detects endogenous levels of Histone H2B protein.
Formulation :	Liquid in PBS containing 50% glycerol, 0.5% BSA and 0.02% sodium azide.
Source :	Rabbit
Dilution :	Western Blot: 1/500 - 1/2000. Immunohistochemistry: 1/100 - 1/300. Immunofluorescence: 1/200 - 1/1000. ELISA: 1/5000. Not yet tested in other applications.
Purification :	The antibody was affinity-purified from rabbit antiserum by affinity-chromatography using epitope-specific immunogen.
Concentration :	1 mg/ml
Storage_stability :	-20°C/1 year
Msds :	MSDS_Antibody.pdf
Other_name :	H2BFS; Histone H2B type F-S; Histone H2B.s; H2B/s
Molecular Weight :	14KD

Product Images



Western Blot analysis of various cells using Histone H2B Polyclonal Antibody diluted at 1 : 1000 cells nucleus extracted by Minute TM Cytoplasmic and Nuclear Fractionation kit (SC-003, Inventbiotech, MN, USA).



Western Blot analysis of COS7 cells using Histone H2B Polyclonal Antibody diluted at 1 : 1000 cells nucleus extracted by Minute TM Cytoplasmic and Nuclear Fractionation kit (SC-003, Inventbiotech, MN, USA).