

## Histone H3.3 Polyclonal Antibody

Catalog_no :	<u>AT2170</u>
Applications :	<u>WB,IHC-p,IF,ELISA</u>
Reactivity :	<u>Human,Mouse,Rat</u>
Category :	<u>抗原抗体</u>
Size :	<u>100µg/50µg/20µg</u>
Gene_name :	<u>H3F3A</u>
Protein_name :	<u>Histone H3.3</u>
Humangene_id :	<u><a href="#">3020/3021</a></u>
Humanswissprot_no :	<u><a href="#">P84243</a></u>
Mousegene_id :	<u><a href="#">15078</a></u>
Mouseswissprot_no :	<u><a href="#">P84244</a></u>
Ratgene_id :	<u><a href="#">1.00362e+008</a></u>
Ratswissprot_no :	<u><a href="#">P84245</a></u>
Immunogen :	<u>The antiserum was produced against synthesized peptide derived from human Histone H3.3. AA range:16-65</u>
Specificity :	<u>Histone H3.3 Polyclonal Antibody detects endogenous levels of Histone H3.3 protein.</u>
Formulation :	<u>Liquid in PBS containing 50% glycerol, 0.5% BSA and 0.02% sodium azide.</u>
Source :	<u>Rabbit</u>
Dilution :	<u>Immunohistochemistry: 1/100 - 1/300. Immunofluorescence: 1/200 - 1/1000. ELISA: 1/5000. Not yet tested in other applications.</u>
Purification :	<u>The antibody was affinity-purified from rabbit antiserum by affinity-chromatography using epitope-specific immunogen.</u>
Concentration :	<u>1 mg/ml</u>
Storage_stability :	<u>-20°C/1 year</u>
Msds :	<u>MSDS_Antibody.pdf</u>

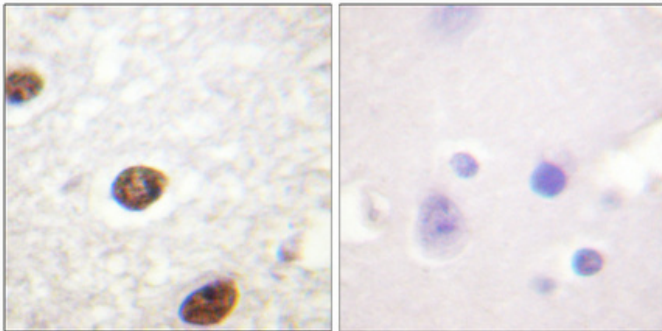
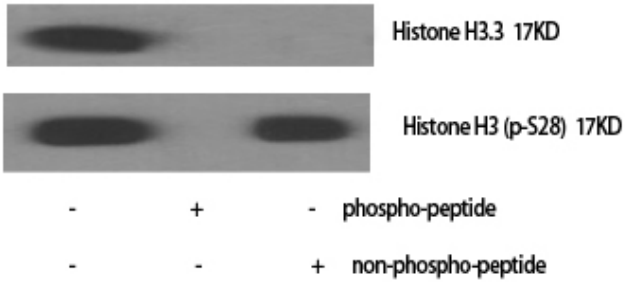


Other\_name : H3F3A; H3.3A; H3F3; PP781; H3F3B; H3.3B; Histone H3.3

Molecular Weight : 15KD

## Product Images

Western Blot analysis of Hela cells using Histone H3.3 Polyclonal Antibody diluted at 1 : 1000 cells nucleus extracted by Minute TM Cytoplasmic and Nuclear Fractionation kit (SC-003, Invent biotech, MN, USA).



Immunohistochemical analysis of paraffin-embedded Human brain. Antibody was diluted at 1:100(4°, overnight). High-pressure and temperature Tris-EDTA, pH8.0 was used for antigen retrieval. Negative control (right) obtained from antibody was pre-absorbed by immunogen peptide.