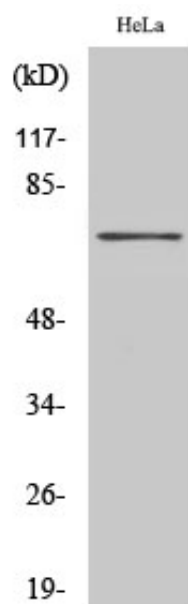


HKR1 Polyclonal Antibody

Catalog_no :	AT2176
Applications :	WB,IHC-p,IF,ELISA
Reactivity :	Human
Category :	抗原抗体
Size :	100µg/50µg/20µg
Gene_name :	HKR1
Protein_name :	Krüppel-related zinc finger protein 1
Humangene_id :	284459
Humanswissprot_no :	P10072
Immunogen :	The antiserum was produced against synthesized peptide derived from human HKR1. AA range:141-190
Specificity :	HKR1 Polyclonal Antibody detects endogenous levels of HKR1 protein.
Formulation :	Liquid in PBS containing 50% glycerol, 0.5% BSA and 0.02% sodium azide.
Source :	Rabbit
Dilution :	Western Blot: 1/500 - 1/2000. Immunohistochemistry: 1/100 - 1/300. Immunofluorescence: 1/200 - 1/1000. ELISA: 1/5000. Not yet tested in other applications.
Purification :	The antibody was affinity-purified from rabbit antiserum by affinity-chromatography using epitope-specific immunogen.
Concentration :	1 mg/ml
Storage_stability :	-20°C/1 year
Msds :	MSDS_Antibody.pdf
Other_name :	HKR1; ZNF875; Krüppel-related zinc finger protein 1; Protein HKR1; Zinc finger protein 875
Molecular Weight :	73KD

Product Images



Western Blot analysis of various cells using HKR1 Polyclonal Antibody cells nucleus extracted by Minute TM Cytoplasmic and Nuclear Fractionation kit (SC-003, Inventbiotech, MN, USA).