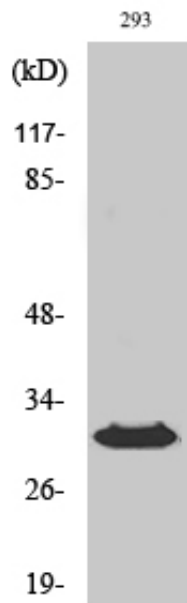


HLA-DO β Polyclonal Antibody

Catalog_no :	AT2178
Applications :	WB,ELISA
Reactivity :	Human
Category :	抗原抗体
Size :	100 μ g/50 μ g/20 μ g
Gene_name :	HLA-DOB
Protein_name :	HLA class II histocompatibility antigen DO beta chain
Humangene_id :	3112
Humanswissprot_no :	P13765
Immunogen :	The antiserum was produced against synthesized peptide derived from human HLA-DOB. AA range:1-50
Specificity :	HLA-DO β Polyclonal Antibody detects endogenous levels of HLA-DO β protein.
Formulation :	Liquid in PBS containing 50% glycerol, 0.5% BSA and 0.02% sodium azide.
Source :	Rabbit
Dilution :	Western Blot: 1/500 - 1/2000. ELISA: 1/40000. Not yet tested in other applications.
Purification :	The antibody was affinity-purified from rabbit antiserum by affinity-chromatography using epitope-specific immunogen.
Concentration :	1 mg/ml
Storage_stability :	-20°C/1 year
Msds :	MSDS_Antibody.pdf
Other_name :	HLA-DOB; HLA class II histocompatibility antigen; DO beta chain; MHC class II antigen DOB
Molecular Weight :	30KD

Product Images



Western Blot analysis of various cells using HLA-DOβ Polyclonal Antibody diluted at 1 : 1000