

HLX1 Polyclonal Antibody

Catalog_no :	AT2181
Applications :	WB,IHC-p,IF,ELISA
Reactivity :	Human,Mouse,Rat
Category :	抗原抗体
Size :	100µg/50µg/20µg
Gene_name :	HLX
Protein_name :	H2.0-like homeobox protein
Humangene_id :	3142
Humanswissprot_no :	Q14774
Mousegene_id :	15284
Mouseswissprot_no :	Q61670
Ratgene_id :	364069
Ratswissprot_no :	A0JPN1
Immunogen :	The antiserum was produced against synthesized peptide derived from human HLX1. AA range:321-370
Specificity :	HLX1 Polyclonal Antibody detects endogenous levels of HLX1 protein.
Formulation :	Liquid in PBS containing 50% glycerol, 0.5% BSA and 0.02% sodium azide.
Source :	Rabbit
Dilution :	Western Blot: 1/500 - 1/2000. Immunohistochemistry: 1/100 - 1/300. Immunofluorescence: 1/200 - 1/1000. ELISA: 1/10000. Not yet tested in other applications.
Purification :	The antibody was affinity-purified from rabbit antiserum by affinity-chromatography using epitope-specific immunogen.
Concentration :	1 mg/ml
Storage_stability :	-20°C/1 year

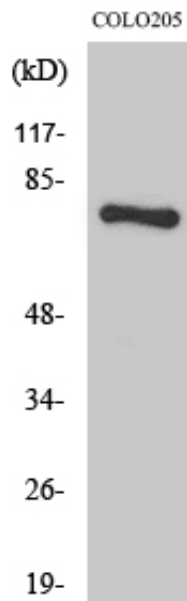


Msd : MSDS_Antibody.pdf

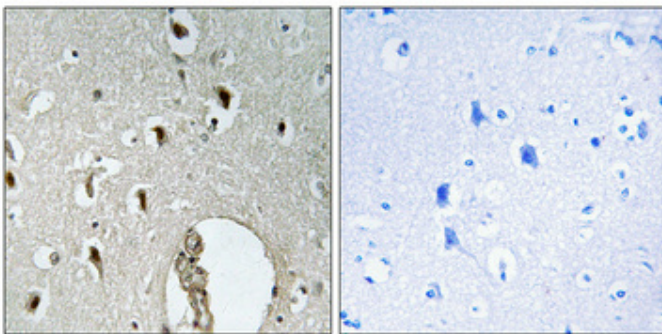
Other_name : HLX; HLX1; H2.0-like homeobox protein; Homeobox protein HB24; Homeobox protein HLX1

Molecular Weight : 75KD

Product Images



Western Blot analysis of various cells using HLX1 Polyclonal Antibody diluted at 1 : 1000



Immunohistochemical analysis of paraffin-embedded Human brain. Antibody was diluted at 1:100(4°, overnight). High-pressure and temperature Tris-EDTA, pH8.0 was used for antigen retrieval. Negative control (right) obtained from antibody was pre-absorbed by immunogen peptide.