

## HMG-2 Polyclonal Antibody

Catalog_no :	<u>AT2187</u>
Applications :	<u>WB,IHC-p,IF,ELISA</u>
Reactivity :	<u>Human,Mouse,Rat</u>
Category :	<u>抗原抗体</u>
Size :	<u>100µg/50µg/20µg</u>
Gene_name :	<u>HMGB2</u>
Protein_name :	<u>High mobility group protein B2</u>
Humangene_id :	<u><a href="#">3148</a></u>
Humanswissprot_no :	<u><a href="#">P26583</a></u>
Mousegene_id :	<u><a href="#">97165</a></u>
Mouseswissprot_no :	<u><a href="#">P30681</a></u>
Ratgene_id :	<u><a href="#">29395</a></u>
Ratswissprot_no :	<u><a href="#">P52925</a></u>
Immunogen :	<u>The antiserum was produced against synthesized peptide derived from human HMGB2. AA range:131-180</u>
Specificity :	<u>HMG-2 Polyclonal Antibody detects endogenous levels of HMG-2 protein.</u>
Formulation :	<u>Liquid in PBS containing 50% glycerol, 0.5% BSA and 0.02% sodium azide.</u>
Source :	<u>Rabbit</u>
Dilution :	<u>Western Blot: 1/500 - 1/2000. Immunohistochemistry: 1/100 - 1/300. Immunofluorescence: 1/200 - 1/1000. ELISA: 1/10000. Not yet tested in other applications.</u>
Purification :	<u>The antibody was affinity-purified from rabbit antiserum by affinity-chromatography using epitope-specific immunogen.</u>
Concentration :	<u>1 mg/ml</u>
Storage_stability :	<u>-20°C/1 year</u>

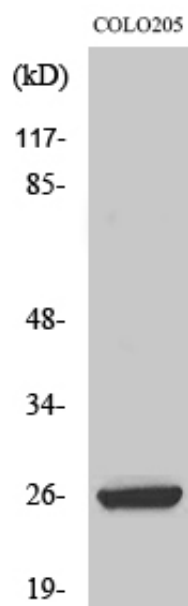


Msd : MSDS\_Antibody.pdf

Other\_name : HMGB2; HMG2; High mobility group protein B2; High mobility group protein 2; HMG-2

Molecular Weight : 27KD

## Product Images



Western Blot analysis of various cells using HMG-2 Polyclonal Antibody