



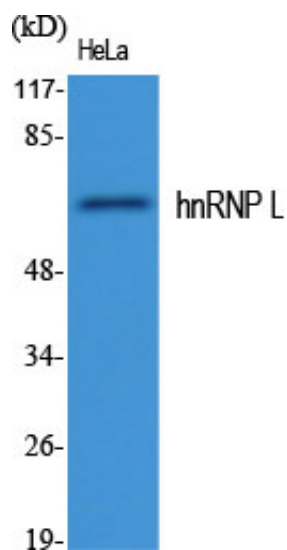
hnRNP L Polyclonal Antibody

Catalog_no :	AT2203
Applications :	WB,IHC-p,IF,ELISA
Reactivity :	Human,Mouse
Category :	抗原抗体
Size :	100µg/50µg/20µg
Gene_name :	HNRNPL
Protein_name :	Heterogeneous nuclear ribonucleoprotein L
Humangene_id :	3191
Humanswissprot_no :	P14866
Mousegene_id :	15388
Mouseswissprot_no :	Q8R081
Immunogen :	The antiserum was produced against synthesized peptide derived from human hnRNP L. AA range:61-110
Specificity :	hnRNP L Polyclonal Antibody detects endogenous levels of hnRNP L protein.
Formulation :	Liquid in PBS containing 50% glycerol, 0.5% BSA and 0.02% sodium azide.
Source :	Rabbit
Dilution :	Western Blot: 1/500 - 1/2000. Immunohistochemistry: 1/100 - 1/300. Immunofluorescence: 1/200 - 1/1000. ELISA: 1/20000. Not yet tested in other applications.
Purification :	The antibody was affinity-purified from rabbit antiserum by affinity-chromatography using epitope-specific immunogen.
Concentration :	1 mg/ml
Storage_stability :	-20°C/1 year
Msds :	MSDS_Antibody.pdf
Other_name :	HNRNPL; HNRPL; P/OKcl.14; Heterogeneous nuclear ribonucleoprotein L; hnRNP L
Molecular	60KD

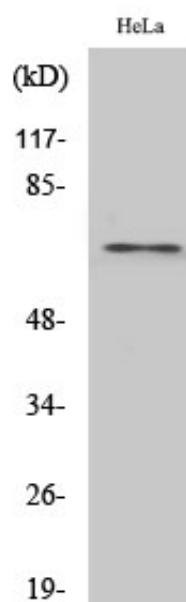


Weight :

Product Images



Western Blot analysis of various cells using hnRNP L Polyclonal Antibody cells nucleus extracted by Minute TM Cytoplasmic and Nuclear Fractionation kit (SC-003, Inventbiotech, MN, USA).



Western Blot analysis of HuvEc cells using hnRNP L Polyclonal Antibody cells nucleus extracted by Minute TM Cytoplasmic and Nuclear Fractionation kit (SC-003, Inventbiotech, MN, USA).