

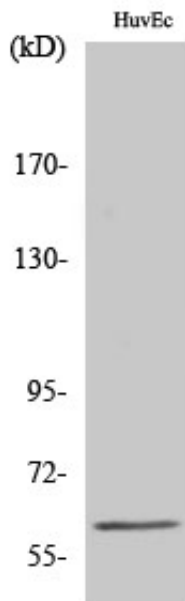
hnRNP LL Polyclonal Antibody

Catalog_no :	AT2204
Applications :	WB,IHC-p,ELISA
Reactivity :	Human,Mouse,Rat
Category :	抗原抗体
Size :	100µg/50µg/20µg
Gene_name :	HNRPLL
Protein_name :	Heterogeneous nuclear ribonucleoprotein L-like
Humangene_id :	92906
Humanswissprot_no :	Q8WVV9
Mousegene_id :	72692
Mouseswissprot_no :	Q921F4
Immunogen :	The antiserum was produced against synthesized peptide derived from human HNRPLL. AA range:241-290
Specificity :	hnRNP LL Polyclonal Antibody detects endogenous levels of hnRNP LL protein.
Formulation :	Liquid in PBS containing 50% glycerol, 0.5% BSA and 0.02% sodium azide.
Source :	Rabbit
Dilution :	Western Blot: 1/500 - 1/2000. Immunohistochemistry: 1/100 - 1/300. ELISA: 1/20000. Not yet tested in other applications.
Purification :	The antibody was affinity-purified from rabbit antiserum by affinity-chromatography using epitope-specific immunogen.
Concentration :	1 mg/ml
Storage_stability :	-20°C/1 year
Msds :	MSDS_Antibody.pdf
Other_name :	HNRPLL; SRRF; BLOCK24; Heterogeneous nuclear ribonucleoprotein L-like; hnRNPLL; Stromal RNA-regulating factor
Molecular	60KD

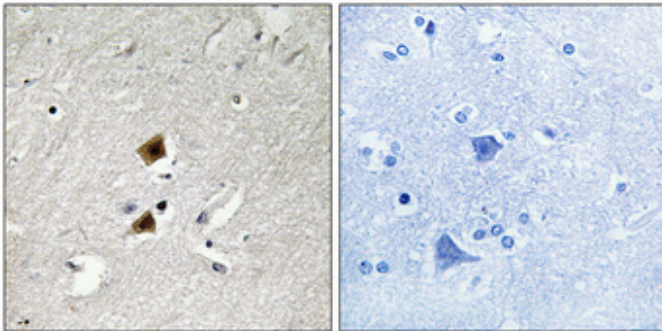


Weight :

Product Images



Western Blot analysis of various cells using hnRNP LL Polyclonal Antibody cells nucleus extracted by Minute TM Cytoplasmic and Nuclear Fractionation kit (SC-003, Inventbiotech, MN, USA).



Immunohistochemical analysis of paraffin-embedded Human brain. Antibody was diluted at 1:100(4°, overnight). High-pressure and temperature Tris-EDTA, pH8.0 was used for antigen retrieval. Negative contrl (right) obtained from antibody was pre-absorbed by immunogen peptide.