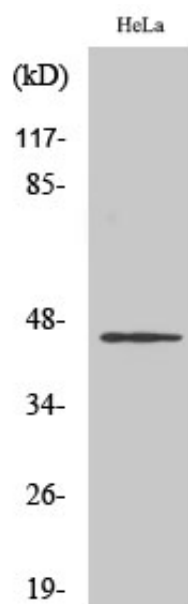


HORMAD1 Polyclonal Antibody

Catalog_no :	AT2207
Applications :	WB,ELISA
Reactivity :	Human
Category :	抗原抗体
Size :	100µg/50µg/20µg
Gene_name :	HORMAD1
Protein_name :	HORMA domain-containing protein 1
Humangene_id :	84072
Humanswissprot_no :	Q86X24
Immunogen :	The antiserum was produced against synthesized peptide derived from human HORMAD1. AA range:321-370
Specificity :	HORMAD1 Polyclonal Antibody detects endogenous levels of HORMAD1 protein.
Formulation :	Liquid in PBS containing 50% glycerol, 0.5% BSA and 0.02% sodium azide.
Source :	Rabbit
Dilution :	Western Blot: 1/500 - 1/2000. ELISA: 1/10000. Not yet tested in other applications.
Purification :	The antibody was affinity-purified from rabbit antiserum by affinity-chromatography using epitope-specific immunogen.
Concentration :	1 mg/ml
Storage_stability :	-20°C/1 year
Msds :	MSDS_Antibody.pdf
Other_name :	HORMAD1; NOHMA; HORMA domain-containing protein 1; Cancer/testis antigen 46; CT46; Newborn ovary HORMA protein
Molecular Weight :	45KD

Product Images



Western Blot analysis of various cells using HORMAD1 Polyclonal Antibody cells nucleus extracted by Minute TM Cytoplasmic and Nuclear Fractionation kit (SC-003, Inventbiotech, MN, USA).